

SIEMENS



A comprehensive range of products, solutions and services

LV Switchgear - Power Distribution Products

Maximum Retail Price w.e.f. 1st October, 2011

Answers for infrastructure.

SIEMENS – SITRAIN INDIA TRAINING CENTER

List of courses on Low Voltage Power Distribution products and solutions

Sr. No.	Title	Days
1	LV Switchgear Products & Maintenance	4
2	LV Power Distribution Systems	2
3	Communication Solution in Power Distribution	2
4	Basic Automation for Switchgear User	3
5	Energy Management Solutions	2
6	Sentron Power Manager	3



Siemens Training Centres In India (Address & Contacts)

TSDC, Kalwa Works
Thane Belapur Road
Thane - 400601
Contact: Ms. Avanti Satam
Tel: 022-27623208/8087
E-mail: cutomer.training.in@siemens.com

Machine Tool Drives Trg. Eklavya Learning Center
2nd Floor, Du Parc Trinity
(Nxt to Big kids Kemp)
No.17, M.G. Road
Bangalore - 560001
Tel: 080-67891689
Contact: Vidhya BalaKrishnan
Tel: 080-67891665

IATC
178, Phase II, Industrial Area
Panchkula - 134113, Haryana
Contact: Ms. Jyoti Bharti
Tel: 0172-5044417
E-mail: jyotibharti@iagautomation.in

Esskay Services
Block No. 801-802, B Wing
Techno City Plot No. X-4/1 & X-4/2
TTC industrial Area, Mahape
Navi Mumbai - 460 710
Tel: 022-27782881
E-mail: mumtc@esskay.in

Karunya University
Karunya Nagar
Coimbatore - 641114
Contact: Mr. V. Jegathesan
Tel: 0422-2614318

Esskay Training Center
Plot No. BG/SE1, 11-I
Near Bhosari Telephone Exchange
MIDC, Bhosari Telephone Exchange
MIDC, Bhosari
Pune - 411026
Tel: 020-32348536
E-mail: punetc@esskay.in

Esskay Services
G01, Matrix Tower
Plot # 24, Block DN
Sector-5, Salt-Lake City
Kolkata - 700 091
Contact: Ms. Soma
E-mail: koltc@esskay.in
(Tel: 033-40044078)

Esskay Technologies
9-10-13, 2nd Floor
Siddam Shetty Complex
Above Canara Bank
Opposite Raymond Showroom, Parklane
Secunderabad - 500003
Contact: Ms. Amrita
Tel: 040-27846111/66901149

For information on prices of below products please refer to the Low Voltage Motor Control Products valid MRP



Index

Contents	Page No.
1 Air Circuit Breakers	8-11
Air circuit breakers - 3WT	
Accessories for 3WT ACBs	
SETRON Automatic Transfer Controller - ATC5300	
Air circuit breakers - 3WL	
Accessories for 3WL ACBs	
2 Moulded Case Circuit Breakers	12-17
Moulded case circuit breakers - 3VT1...5	
Accessories for 3VT1...5	
Moulded case circuit breakers - 3VL	
Accessories for 3VL	
3 Betagard Modular and Installation Devices	18
Betagard Miniature Circuit Breakers	
Betagard Auto Transfer Switching Equipment - 5TR	
4 Energy Management System	22-23
Multifunction meter PAC 3100 / 3200 / 4200	
Energy Management Software: Power Config and Power Manager	
5 Load Break Switches	24-28
Switch disconnecter fuse - 3KT	
Switch disconnecter fuse - 3KL	
Switch disconnecter - 3KA	
Switch disconnecter fuse in SS housing - 3KL	
SS Enclosure for 3KT	
Switch disconnecter fuse 2 pole - 3KL	
Accessories for superswitch - 3KX	
Fuse Selection Guide	
Fuse switch disconnecter - 3NP1	
Emergency stop switches - 3LD	
Rotary switches - 3LA and 3ST	

Contents	Page No.
6 Fuses	30-33
DIN fuses - 3NA / Fuse bases (DIN)	
DIN isolating links - 3NG	
BS fuses - 3NW	
Fuse holders and accessories for fuses - 3NH, 3NW	
Fuses for semiconductor protection - 3NE/ 3NC	
7 Type-2 Co-ordination Charts	34-38
8 Available till stocks last products	38
9 Contact Partners	
Training centres	Front cover inside
Customer care	Back cover inside
Offices and territory managers	Back cover

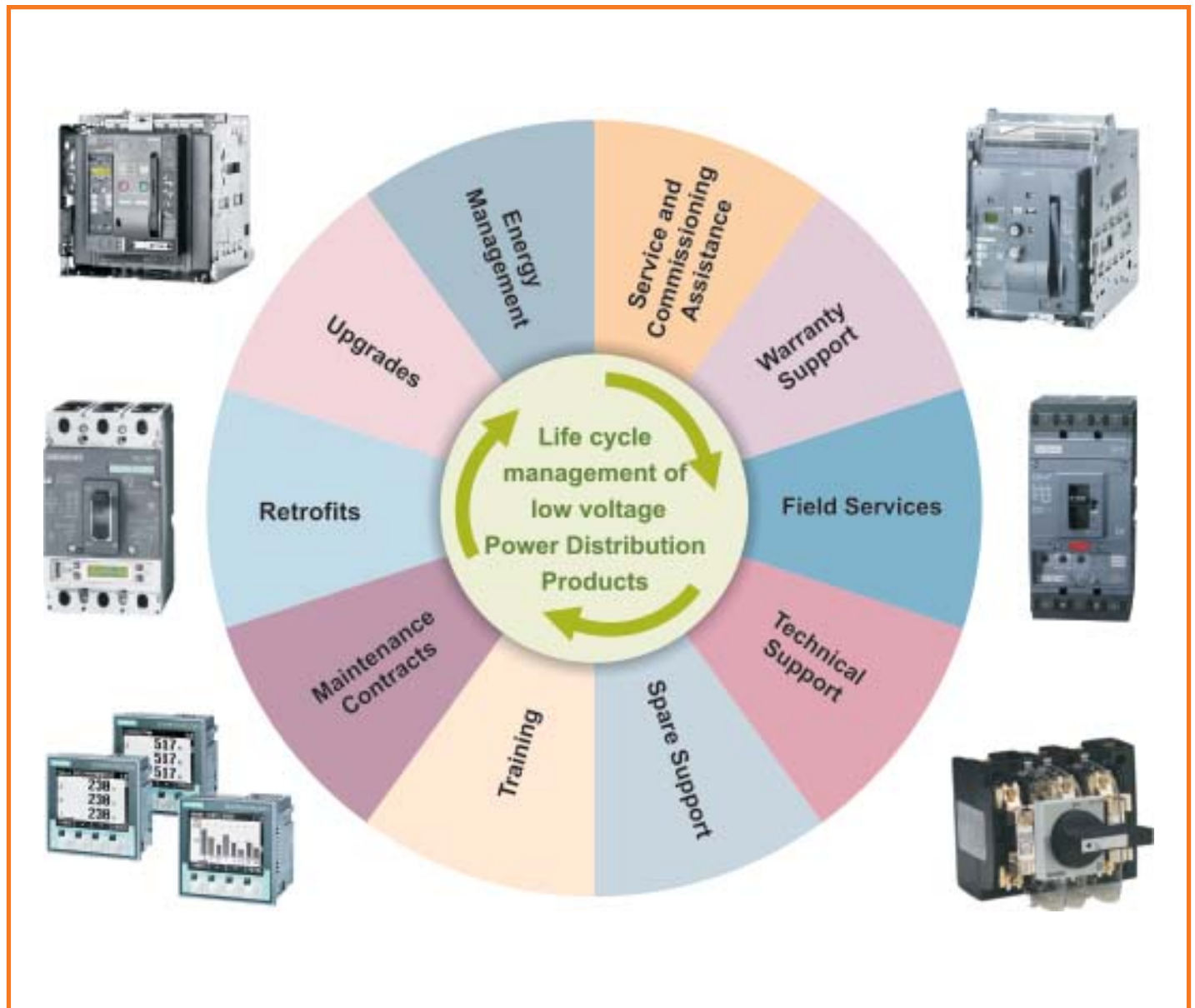


Siemens switchgear. Tried, tested, trusted.

One point contact for your service needs

The comprehensive range of services from Siemens is sure to cover the needs of the most varied users. We offer structured services, designed to give you valuable support in every phase during the lifecycle of your low voltage products and systems –

from warranty support to suitable retrofit solutions. Additionally we also provide Energy Management solutions and Technology upgrade solutions for your existing switchgear.



Please get in touch with us for details

CUSTOMER CARE

Toll Free No: 18002090987 • E-mail: adscs.india@siemens.com

SIEMENS

Planning to configure your power distribution system?

Easy, fast and safe with SIMARIS design

Answers for infrastructure.

SIMARIS design software can be effectively used in planning and execution stage, where it helps in efficient designing by allowing easy editing of network diagrams and generating project outputs in various editable formats. The versatility of the software is enhanced by the large no. of editable outputs it generates including 'detailed project documentation', 'Switchboard-wise BOM of Switchgear', 'Short circuit current data table', 'Cable Schedule' and 'SLD' in PDF and AutoCAD format.

For more details mail to: globalproducts.in@siemens.com



www.siemens.co.in

SIEMENS



Compact substation - An ideal solution to power your buildings

Solution for Quality Power....

Answers for infrastructure.

Compact sub-station Mini-Sub 8FB20 comprises MV switchgear, transformer, and LV distribution. Occupying just 6 sq.mtrs of floor space saves up to 50% space in comparison to a conventional distribution system. Siemens Mini-Sub 8FB20 is type tested as per IEC 62271-202, at KEMA Labs – Netherlands, thus ensuring complete safety and reliability. The unique 'Rectangular or 3-way cooling' design offers optimum utilization of the

transformer, thus saving both capital and operational costs. Available in ratings up to 2000KVA, the Mini-Sub 8FB20 can be installed almost anywhere in buildings including basements, parking lots, open spaces, or even on terraces.

Effective utilization of available space means profits; Siemens Mini-Sub 8FB20 makes every square inch count.



www.siemens.co.in

SIEMENS



Right choice for every application

3WL, 3VL, 3WT, 3VT circuit breakers

Answers for infrastructure.

With New generation releases 3WL, 3VL, 3WT & 3VT circuit breakers offer safe and accurate protection to plant and personnel. The compact and modular design of the circuit breakers creates potential for space saving. High performance capability at higher temperature provide suitability for varied operating conditions & higher life. The complete range serves a wide variety of applications from 16A – 6300A & also fulfils the need of basic and advanced levels of communication effectively.

For more details mail to: globalproducts.in@siemens.com



www.siemens.co.in

Siemens switchgear. Tried, tested, trusted.

ACB: 3WT

- Conforms to IS 13947-2, IEC 60947-2
- Rated current - 630A to 4000A
- Accurate protection through microprocessor based trip unit
- Unique ready-to-close interlock for maximum safety
- Mechanical contact erosion indicator
- Fully rated upto 50°C
- Neutral 100% rated
- Integrated online test facility
- Available in 690V AC version also

LCD display as standard



Standard breaking capacity, 500VAC $I_{CS} = 100\% I_{CU}$.

Microprocessor based trip unit ETU37WT: LSING + Display

Frame Size	Rated current In (A)		Withdrawable design with Guide Frame ²⁾			
			3 Pole	Unit MRP* ₹	4 Pole	Unit MRP* ₹
I	630	MDO	3WT8061-6AA04-5AB2	117315.-	3WT8065-6AA04-5AB2	152515.-
		EDO	3WT8061-6UA34-5AB2	151745.-	3WT8065-6UA34-5AB2	186945.-
	800	MDO	3WT8081-6AA04-5AB2	119310.-	3WT8085-6AA04-5AB2	156180.-
		EDO	3WT8081-6UA34-5AB2	153740.-	3WT8085-6UA34-5AB2	190610.-
	1000	MDO	3WT8101-6AA04-5AB2	127170.-	3WT8105-6AA04-5AB2	164965.-
		EDO	3WT8101-6UA34-5AB2	161600.-	3WT8105-6UA34-5AB2	199395.-
	1250	MDO	3WT8121-6AA04-5AB2	159100.-	3WT8125-6AA04-5AB2	189125.-
		EDO	3WT8121-6UA34-5AB2	193530.-	3WT8125-6UA34-5AB2	223555.-
1600	MDO	3WT8161-6AA04-5AB2	170750.-	3WT8165-6AA04-5AB2	206705.-	
	EDO	3WT8161-6UA34-5AB2	205180.-	3WT8165-6UA34-5AB2	241135.-	
II	2000	MDO	3WT8202-6AA04-5AB2	202980.-	3WT8206-6AA04-5AB2	259245.-
		EDO	3WT8202-6UA34-5AB2	237410.-	3WT8206-6UA34-5AB2	293675.-
	2500	MDO	3WT8252-6AA04-5AB2	238595.-	3WT8256-6AA04-5AB2	303335.-
		EDO	3WT8252-6UA34-5AB2	273025.-	3WT8256-6UA34-5AB2	337765.-
	3200	MDO	3WT8322-6AA04-5AB2	305885.-	3WT8326-6AA04-5AB2	375330.-
		EDO	3WT8322-6UA34-5AB2	340315.-	3WT8326-6UA34-5AB2	409760.-

Microprocessor based Trip Units

ETU35WT: LSI + Display



Frame Size	Rated current In (A)		Fixed Mounted design ³⁾			
			3 Pole	Unit MRP* ₹	4 Pole	Unit MRP* ₹
I	630	MF	3WT8061-6AA00-0AA2	74790.-	3WT8065-6AA00-0AA2	101190.-
		EF	3WT8061-6UA30-0AA2	109220.-	3WT8065-6UA30-0AA2	135620.-
	800	MF	3WT8081-6AA00-0AA2	80735.-	3WT8085-6AA00-0AA2	111085.-
		EF	3WT8081-6UA30-0AA2	115165.-	3WT8085-6UA30-0AA2	145515.-
	1000	MF	3WT8101-6AA00-0AA2	82300.-	3WT8105-6AA00-0AA2	117675.-
		EF	3WT8101-6UA30-0AA2	116730.-	3WT8105-6UA30-0AA2	152105.-
	1250	MF	3WT8121-6AA00-0AA2	111945.-	3WT8125-6AA00-0AA2	132375.-
		EF	3WT8121-6UA30-0AA2	146375.-	3WT8125-6UA30-0AA2	166805.-
1600	MF	3WT8161-6AA00-0AA2	114305.-	3WT8165-6AA00-0AA2	141795.-	
	EF	3WT8161-6UA30-0AA2	148735.-	3WT8165-6UA30-0AA2	176225.-	
II	2000	MF	3WT8202-6AA00-0AA2	128550.-	3WT8206-6AA00-0AA2	184530.-
		EF	3WT8202-6UA30-0AA2	162980.-	3WT8206-6UA30-0AA2	218960.-
	2500	MF	3WT8252-6AA00-0AA2	145105.-	3WT8256-6AA00-0AA2	216655.-
		EF	3WT8252-6UA30-0AA2	179535.-	3WT8256-6UA30-0AA2	251085.-
	3200	MF	3WT8322-6AA00-0AA2	220925.-	3WT8326-6AA00-0AA2	272080.-
		EF	3WT8322-6UA30-0AA2	255355.-	3WT8326-6UA30-0AA2	306510.-

Microprocessor based Trip Units

ETU35WT: LSI + Display



L: Overload protection S: Delayed Short Circuit protection I: Short circuit protection G: Ground fault protection N: Neutral protection

Standard accessories included for electrical ACB (EDO/EF) = Motor operated mechanism, with mechanical and electrical closing, motor and closing solenoid of 220-240V AC/DC and shunt release of 220-240V AC/DC.

¹⁾ Current transformer for N-conductor shall be ordered separately for 3P ACB with Earth Fault and Neutral Conductor Protection.

²⁾ Standard Accessories included for draw out type ACB (EDO/MDO) = Safety shutter, sealing cap over Off button, door sealing frame, trip unit transparent cover, trip signaling contact, ready to close signaling contact, auxiliary contacts 2NO+ 2NC

³⁾ Standard accessories included for fixed type ACB (EF/MF) = Door sealing frame, trip unit transparent cover, trip signaling contact, ready to close signaling contact, auxiliary contacts 2NO+2NC

Note: Please contact nearest sales office for information on prices of 4000A ACB & 690V AC ACB.

3WT Accessories

Description	AC 50/60Hz V	DC V	Type	Unit MRP ₹
Motorized Operating Mechanism with Electrical closing	110-127	110-125	3WT9831-1JH00	28390.-
	220-240	220-250	3WT9831-1JK00	28390.-
Shunt Release or Closing Coil Suitable for continuous operation	-	24	3WT9851-1JB00	2565.-
	110-127	110-125	3WT9851-1JH00	2565.-
	220-240	220-250	3WT9851-1JK00	2565.-
Under Voltage Release Instantaneous	110-127	110-125	3WT9853-1JH00	3225.-
	208-240	220-250	3WT9853-1JK00	3225.-
	380-415	-	3WT9853-1JM00	3225.-
Auxiliary Terminal Block	Fixed circuit breaker		3WT9825-1JC00	2265.-
	Drawout circuit breaker		3WT9827-1JA00	2265.-
Auxiliary Switch Block	2 Change over		3WT9816-1CE00	1285.-
Position Signal Switch for Withdrawable Breaker	3NO+3NC, 2NO+2NC, 1NO+1NC		3WT9884-1JC10	3225.-
5 digit operating cycle counter			3WT9864-0CA00	5260.-
Blocking Device for preventing opening of cubicle door in service position: for Withdrawable Breaker Blocking Device for preventing opening of cubicle door in service position: for Fixed Breaker			3WT9867-1JC00	2430.-
			3WT9867-2JA00	2430.-
Castell Lock Mounting Kit			3WT9863-6JE00	3665.-
Castell Lock			3WX3663-6JEL_#	2225.-
Door Sealing Frame			3WX3686-0JA00	1415.-
External Current Sensor for N-conductor (For 3P ACB with Neutral or E/F Protection)	Size I		3WL9111-0AA21-0AA0	11485.-
	Size II		3WL9111-0AA22-0AA0	13340.-
External Current Sensor for N-conductor with copper connectors (for 3P ACB with Neutral or E/F protection)	Size I		3WL9111-0AA31-0AA0	12600.-
	Size II		3WL9111-0AA32-0AA0	14460.-

Types of castell locks shall be of type A, B, C, D, AB, AC; _ to be replaced by the type no.

For fitment of motor/ shunt/ closing coil/ UV release/ addl. auxiliary contacts please order necessary Auxiliary terminal blocks as per circuit diagram.

Retrofit solution

Description	Unit MRP ₹
Ready to fit kit for upgrading from our old or other make conventional Air Circuit Breaker to modern Sentron range of ACBs. <ul style="list-style-type: none"> • Minimum Shut Down Time • No change in the existing panel except door cut out • No change in the existing panel bus-bars • Proven Siemens Design • No over heating • Cost Effective & Quality Solution 	Upon enquiry

For more details write to us at: adscs.india@siemens.com

SENTRON Automatic Transfer Controller ATC5300 New

- Auto, Manual and Test modes of operation
- Monitoring and Display of status of Normal and Replacement Supply
- Programmable I/Os and Alarm Indication
- Remote parameterization on PC via SENTRON Software ATC
- Communication on Modbus RTU
- Suitable for Motorized versions of 3WL, 3WT, 3VL and 3VT circuit breakers



Description	Type	Unit MRP * ₹	Std. pkg. (nos.)
SENTRON Automatic Transfer Controller ATC5300	3KC90008TL30	61585.-	1
SENTRON Software ATC	3KC90008TL70	Upon enquiry	1

* MRP - Maximum Retail Price

SIEMENS

Assured backup, always reliable

SENTRON ATC5300

Answers for infrastructure.

The New Auto Transfer Controller SENTRON ATC5300, when equipped with two motor-driven switches/ circuit breakers, serves as a transfer system that automatically or manually switches between two power supply systems in low-voltage power distribution applications. Compliance to IEC 60947-6-1 ensures absolute reliability & its versatility to operate even between two generators comes as a great benefit to the customers. It also offers user-friendly features like Digital I/O, Generator Control, programmable generator testing facility, local & remote parameterization with dedicated software and so on. Features like Modbus communication capability & EJP Function make it an integral component in any energy management system.

For more details mail to: globalproducts.in@siemens.com



www.siemens.co.in

ACB: SENTRON 3WL

- Conforms to IS 13947-2, IEC 60947-2
- Rated current - 630A to 6300A
- Accurate protection through microprocessor based trip unit
- Unique ready-to-close interlock for maximum safety
- Mechanical contact erosion indicator
- Fully rated upto 55°C
- Neutral 100% rated
- Integrated online test facility
- Unique CubicleBus technology
- Data communication and power management options



Standard breaking capacity $I_{CS} = 100\% I_{CU}$

Manually operated breakers

Microprocessor based trip unit ETU45B LSIN protection (Overload and short circuit protection)

Frame Size	Rated Current In (A)	Type	Withdrawable design with Guide Frame		Fixed mounted design	
			Unit MRP* ₹	Unit MRP* ₹	Unit MRP* ₹	Unit MRP* ₹
			3 Pole	4 Pole	3 Pole	4 Pole
I	630	3WL1106....	154010.-	202660.-	104815.-	157200.-
	800	3WL1108....	155715.-	206690.-	108045.-	161215.-
	1000	3WL1110....	159885.-	221130.-	118595.-	170275.-
	1250	3WL1112....	194020.-	255415.-	145915.-	207915.-
	1600	3WL1116....	214145.-	280775.-	154440.-	223995.-
II	2000	3WL1220....	232520.-	308570.-	154450.-	225050.-
	2500	3WL1225....	273400.-	351865.-	164190.-	259410.-
	3200	3WL1232....	354595.-	487905.-	234000.-	393905.-
	4000	3WL1240....	408105.-	518995.-	Upon Enquiry	Upon Enquiry
III	5000	3WL1350....	Upon Enquiry	Upon Enquiry	Upon Enquiry	Upon Enquiry
	6300	3WL1363....	Upon Enquiry	Upon Enquiry	Upon Enquiry	Upon Enquiry

Breakers with other breaking capacities available on request

L: Overload protection S: Delayed Short Circuit protection I: Short circuit protection
G: Ground fault protection N: Neutral protection

Microprocessor based Release	Add MRP ₹
For ground fault protection	11455.-
Protection function LSIN with Current display	4970.-
Protection function LSING with Current display	16425.-

For prices of breakers with other types of microprocessor based trip unit, please consult your nearest sales office

Motorised Mechanism	Add MRP ₹
208-240VAC, 220Vdc motor, closing coil & Shunt trip coil	42100.-
110-127VAC, 110Vdc motor, closing coil & Shunt trip coil	42100.-

Other voltages available on request

All ACBs are with Top Horizontal - Bottom Horizontal main terminals except 6300A & 4000A which have only Vertical-Vertical main termination

All Breakers are supplied with Door Sealing Frame & 2NO+2NC auxiliary contact block as standard.

Transparent cover for trip unit supplied as standard with all breakers. *Not applicable for breakers without trip unit.*

Neutral CT if required, shall be ordered separately. *Castell locks are to be ordered separately. Please consult us for details.

Please consult your nearest sales office for complete ordering code.

Accessories

Description	AC 50/60Hz V	DC V	Type	Unit MRP ₹
Shunt Release or Closing Coil Suitable for continuous operation	-	24	3WL9 111-0AD01-0AA0	6970.-
	110	110	3WL9 111-0AD05-0AA0	6970.-
	230	220	3WL9 111-0AD06-0AA0	6970.-
Under Voltage Release Instantaneous	110-127	110-125	3WL9 111-0AE04-0AA0	7705.-
	208-240	220-250	3WL9 111-0AE05-0AA0	7705.-
	380-415	-	3WL9 111-0AE06-0AA0	7705.-
Auxiliary Switch Block	2NO+2NC		3WL9 111-0AG01-0AA0	4080.-

Please order necessary auxiliary terminal blocks as per circuit diagram while ordering accessories. Please consult your nearest sales office for type nos.

* MRP - Maximum Retail Price

Siemens Ltd. LV SGR - Power Distribution Products MRP Eff. 01-10-2011 11

MCCB: 3VT1...5

- Rated current - 16 to 1600 A
- 3- and 4-pole versions
- Breaking capacity from 25kA to 65kA
- Thermal magnetic and Microprocessor based trip unit
- Switch disconnecter for complete range
- Special purpose trip unit for motor & generator protection
- Under voltage & shunt release with multiple voltage settings
- Fixed mounted, plug-in and draw-out versions



3VT1, Thermal Magnetic trip unit, I_{cu} = 25kA, 415 V AC, 50 Hz MCCB (Fixed Overload & Fixed Short Circuit Settings) for line protection

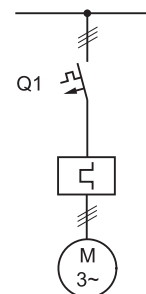
Rated current I _n (A)	3 Pole		4 Pole		Std. pkg. (nos.)
	Type	Unit MRP* ₹	Type	Unit MRP* ₹	
40	3VT1704-2DA36-0AA0	4870.-	3VT1704-2EA46-0AA0	6575.-	1
63	3VT1706-2DA36-0AA0	4870.-	3VT1706-2EA46-0AA0	6575.-	1
80	3VT1708-2DA36-0AA0	4870.-	3VT1708-2EA46-0AA0	6575.-	1
100	3VT1710-2DA36-0AA0	4870.-	3VT1710-2EA46-0AA0	6575.-	1
125	3VT1712-2DA36-0AA0	6450.-	3VT1712-2EA46-0AA0	8920.-	1
160	3VT1716-2DA36-0AA0	8805.-	3VT1716-2EA46-0AA0	11155.-	1

3VT1, Thermal Magnetic trip unit, I_{cu} = 25kA, 415 V AC, 50 Hz MCCB (Adjustable Overload & Adjustable Short Circuit Settings) for line protection

Rated current I _n (A)	3 Pole		4 Pole		Std. pkg. (nos.)
	Type	Unit MRP* ₹	Type	Unit MRP* ₹	
16	3VT1701-2DC36-0AA0	5455.-	3VT1701-2EC46-0AA0	8220.-	1
25	3VT1792-2DC36-0AA0	5455.-	3VT1792-2EC46-0AA0	8220.-	1
32	3VT1703-2DC36-0AA0	5455.-	3VT1703-2EC46-0AA0	8220.-	1
40	3VT1704-2DC36-0AA0	5455.-	3VT1704-2EC46-0AA0	8220.-	1
63	3VT1706-2DC36-0AA0	5455.-	3VT1706-2EC46-0AA0	8220.-	1
80	3VT1708-2DC36-0AA0	5455.-	3VT1708-2EC46-0AA0	8220.-	1
100	3VT1710-2DC36-0AA0	5455.-	3VT1710-2EC46-0AA0	8220.-	1
125	3VT1712-2DC36-0AA0	7040.-	3VT1712-2EC46-0AA0	9625.-	1
160	3VT1716-2DC36-0AA0	9685.-	3VT1716-2EC46-0AA0	12325.-	1

3VT1, Thermal Magnetic trip unit for Motor Protection, I_{cu} = 25kA, 415 V AC, 50 Hz MCCB (Adjustable Overload & Fixed Short Circuit Settings)

Rated current I _n (A)	3 Pole Type	Unit MRP* ₹	Std. pkg. (nos.)
16	3VT1701-2DM36-0AA0	5365.-	1
20	3VT1702-2DM36-0AA0	5365.-	1
25	3VT1792-2DM36-0AA0	5365.-	1
32	3VT1703-2DM36-0AA0	5365.-	1
40	3VT1704-2DM36-0AA0	5365.-	1
50	3VT1705-2DM36-0AA0	5365.-	1
63	3VT1706-2DM36-0AA0	5365.-	1
80	3VT1708-2DM36-0AA0	5365.-	1
100	3VT1710-2DM36-0AA0	5365.-	1



Switch disconnecter

Rated current I _n (A)	3 Pole		4 Pole		Std. pkg. (nos.)
	Type	Unit MRP* ₹	Type	Unit MRP* ₹	
160	3VT1716-2DE36-0AA0	7620.-	3VT1716-2EE46-0AA0	9595.-	1

Main switching unit (without any protection)

To be ordered along with trip unit or switch disconnecter unit

Frame Size	Breaking capacity (Icu, 415V AC, 50Hz)	Rated current I _n (A)	3 pole		4 pole		Std. pkg. (nos.)
			Type	Unit MRP* ₹	Type	Unit MRP* ₹	
3VT2	36 kA	250	3VT2725-2AA36-0AA0	5080.-	3VT2725-2AA46-0AA0	7900.-	1
3VT3		630	3VT3763-2AA36-0AA0	12415.-	3VT3763-2AA46-0AA0	17495.-	1
3VT2	65 kA	250	3VT2725-3AA36-0AA0	6235.-	3VT2725-3AA46-0AA0	9675.-	1
3VT3		630	3VT3763-3AA36-0AA0	13975.-	3VT3763-3AA46-0AA0	18545.-	1
3VT4	55 kA	1000	3VT4710-3AA30-0AA0	22360.-			
3VT5		1600	3VT5716-3AA30-0AA0	33540.-			



Microprocessor based Trip Unit (ETU)

To be ordered along with the MCCB Main switching unit

Trip unit for system protection ETU LP, LI function
(Fixed Overload & Fixed Short Circuit, 3P / 4P)

Frame size	Rated current I _n (A)	Type	Unit MRP* ₹	Std. pkg. (nos.)
3VT2	160	3VT9216-6AB00	4515.-	1
	200	3VT9220-6AB00	6770.-	1
	250	3VT9225-6AB00	10725.-	1
3VT3	315	3VT9331-6AB00	9030.-	1
	400	3VT9340-6AB00	9595.-	1
	630	3VT9363-6AB00	12980.-	1

Trip unit for Motor & Generator Protection ETU MP, LI function
(Adj Overload & Adj Short Circuit Settings 3P / 4P)

Frame size	Rated current I _n (A)	Type	Unit MRP* ₹	Std. pkg. (nos.)
3VT2	100	3VT9210-6AP00	5365.-	1
	160	3VT9216-6AP00	5645.-	1
	250	3VT9225-6AP00	11850.-	1
3VT3	400	3VT9340-6AP00	11850.-	1
	630	3VT9363-6AP00	14675.-	1

Trip unit for system protection ETU DP, LI function
(Adj Overload & Adj Short Circuit, 3P / 4P)[§]

Frame size	Rated current I _n (A)	Type	Unit MRP* ₹	Std. pkg. (nos.)
3VT2	100	3VT9210-6AC00	3980.-	1
	160	3VT9216-6AC00	5590.-	1
	250	3VT9225-6AC00	11825.-	1
3VT3	250	3VT9325-6AC00	10210.-	1
	400	3VT9340-6AC00	10210.-	1
	630	3VT9363-6AC00	13440.-	1
3VT4	800	3VT9480-6AC00	11180.-	1
	1000	3VT9410-6AC00	35220.-	1
3VT5	1250	3VT9512-6AC00	38150.-	1
	1600	3VT9516-6AC00	64565.-	1

Switch Disconnecter Unit, 3P / 4P[§]

Frame size	Rated current I _n (A)	Type	Unit MRP* ₹	Std. pkg. (nos.)
3VT2	250	3VT9225-6DT00	2820.-	1
3VT3	630	3VT9363-6DT00	4515.-	1
3VT4	1000	3VT9410-6DT00	17610.-	1
3VT5	1600	3VT9516-6DT00	23480.-	1

Benefits of interchangeable trip units

- Suitable for various applications
- Easy upgradation at site

Note : The ordering of the microprocessor based MCCB would involve

Main switching unit + Trip unit



Main switching unit



Trip unit



Complete unit

§: Please note 3VT4 & 3VT5 trip unit prices are only for 3 pole

* MRP - Maximum Retail Price

Accessories for 3VT1...5

Accessory			3VT1 Type	Unit MRP* ₹	3VT2 Type	Unit MRP* ₹	3VT3 Type	Unit MRP* ₹	3VT4/5 Type	Unit MRP* ₹
Auxiliary Switch			3VT9100-2AB10 (Changeover Switch)	865.-	3VT9300-2AF10 (1NO+1NC)	1345.-	3VT9300-2AF10 (1NO+1NC)	1345.-	3VT9500-2AF10 (2NO+2NC)	2235.-
					3VT9300-2AC10 (1NO)	670.-	3VT9300-2AC10 (1NO)	670.-		
Alarm Switch			3VT9100-2AH10 (Changeover Switch)	865.-	3VT9300-2AD10 (1NC)	670.-	3VT9300-2AD10 (1NC)	670.-		
Shunt Release		AC 230V/ DC 220V	3VT9100-1SE00@	1180.-	3VT9300-1SE00\$	1525.-	3VT9300-1SE00\$	1525.-	3VT9500-1SJ00	1690.-
		AC/DC 110V	3VT9100-1SD00	1180.-	3VT9300-1SD00	1525.-	3VT9300-1SD00	1525.-	3VT9500-1SH00	1690.-
Under-voltage Release		AC 230V/ DC 220V	3VT9100-1UE00^	1450.-	3VT9300-1UE00\$	1850.-	3VT9300-1UE00\$	1850.-	3VT9500-1UJ00	1830.-
Spreader Links		one set = 3 links (3 pole)	3VT9100-4ED30	400.-	3VT9200-4EG30	510.-	3VT9300-4EG30	680.-		
		4 pole spreaders (one set = 4 links + 3 phase barriers)	3VT9100-4ED48	520.-	3VT9200-4ED48	670.-	3VT9300-4ED48	880.-		
Motorised Drive		AC 230 V/ DC 220 V	3VT9100-3ME00#	5135.-	3VT9200-3MQ00	16815.-	3VT9300-3MQ00	17470.-	3VT9500-3MQ00	32760.-
Phase Barriers		One set = 2 Pcs.	3VT9100-8CE30	360.-	3VT9300-8CE30	510.-	3VT9300-8CE30	510.-	3VT9500-8CE30	555.-
Panel door mounted rotary operating handles		1 set **	3VT9100-3HQ00	1150.-	3VT9200-3HQ00	1460.-	3VT9300-3HQ00	1570.-	3VT9500-3HQ00	3355.-
Castell Interlock Kit ¹		1 set (1 lock + 1 key)	8UC60700YQ..	2630.-	8UC60701YQ..	2630.-	8UC60701YQ..	2630.-	8UC60702YQ..	2700.-

Notes:

- The 11th and 12th place of the type reference will indicate the alphabet type of lock & key. Combinations available are A, B, C, D, A-, -B, -C, AB, AC. 11th place will be A, B, C, D for castell lock type A, B, C, D respectively. 11th and 12 place will be A0, 0B, 0C, AB, AC for castell lock type A-, -B, -C, AB, AC respectively.
- For direct & lateral mounted handles please contact your nearest Sales Office.

- # Lateral Motorised Drive
- @ Also suitable for 400V AC
- \$ Also suitable for 400/500V AC
- ^ Not suitable for 220V DC, suitable for 400V AC
- ** 1 set contains rotary mechanism, coupler, shaft and door drive

MCCB: Sentron 3VL

- Upto 1600A
- 3- pole & 4- pole versions
- Thermal magnetic and Microprocessor based trip unit



3VL MCCB, Thermal-magnetic trip unit (adjustable overload and short circuit), Standard breaking capacity Icu = 55kA, 415V AC, 50 Hz

Frame size	Rated current I _n (A)	3 pole		4 pole		Std. pkg. (nos.)
		Type	Unit MRP* ₹	Type	Unit MRP* ₹	
VL160X / VL160 VL160X = 3VL1 VL160 = 3VL2	20	3VL1702-1DD36-0AA0	7720.-	3VL1702-1EA46-0AA0#	10295.-	1
	32	3VL1703-1DD36-0AA0	7720.-	3VL1703-1EA46-0AA0#	10295.-	1
	63	3VL1706-1DD36-0AA0	7720.-	3VL2706-1EM46-0AA0	10295.-	1
	100	3VL1710-1DD36-0AA0	8075.-	3VL2710-1EM46-0AA0	10765.-	1
	125	3VL1712-1DD36-0AA0	9225.-	3VL2712-1EM46-0AA0	11725.-	1
	160	3VL1716-1DD36-0AA0	11585.-	3VL2716-1EM46-0AA0	15160.-	1
VL 250	200	3VL3720-1DC36-0AA0	18445.-	3VL3720-1EM46-0AA0	25740.-	1
	250	3VL3725-1DC36-0AA0	20015.-	3VL3725-1EM46-0AA0	25740.-	1
VL 400	315	3VL4731-1DC36-0AA0	27685.-	3VL4731-1EM46-0AA0	33780.-	1
	400	3VL4740-1DC36-0AA0	27685.-	3VL4740-1EM46-0AA0	33780.-	1
VL 630	500	3VL5750-1DC36-0AA0	31690.-	3VL5750-1EM46-0AA0	37680.-	1
	630	3VL5763-1DC36-0AA0	31690.-	3VL5763-1EM46-0AA0	37680.-	1

3VL MCCB, Thermal-magnetic trip unit (adjustable overload and short circuit), High breaking capacity Icu = 70kA, 415V AC, 50 Hz

Frame size	Rated current I _n (A)	3 pole		4 pole		Std. pkg. (nos.)
		Type	Unit MRP* ₹	Type	Unit MRP* ₹	
VL160X / VL160 VL160X = 3VL1 VL160 = 3VL2	20	3VL1702-2DD36-0AA0	12365.-	3VL1702-2EA46-0AA0#	15770.-	1
	32	3VL1703-2DD36-0AA0	12365.-	3VL1703-2EA46-0AA0#	15770.-	1
	63	3VL1706-2DD36-0AA0	12365.-	3VL2706-2EM46-0AA0	15770.-	1
	100	3VL1710-2DD36-0AA0	12365.-	3VL2710-2EM46-0AA0	15770.-	1
	125	3VL1712-2DD36-0AA0	17620.-	3VL2712-2EM46-0AA0	22950.-	1
	160	3VL1716-2DD36-0AA0	18390.-	3VL2716-2EM46-0AA0	23570.-	1
VL 250	200	3VL3720-2DC36-0AA0	22720.-	3VL3720-2EM46-0AA0	30915.-	1
	250	3VL3725-2DC36-0AA0	24730.-	3VL3725-2EM46-0AA0	30195.-	1
VL 400	315	3VL4731-2DC36-0AA0	27820.-	3VL4731-2EM46-0AA0	36165.-	1
	400	3VL4740-2DC36-0AA0	27820.-	3VL4740-2EM46-0AA0	36165.-	1
VL 630	500	3VL5750-2DC36-0AA0	34825.-	3VL5750-2EM46-0AA0	45630.-	1
	630	3VL5763-2DC36-0AA0	34825.-	3VL5763-2EM46-0AA0	45630.-	1

3VL MCCB, Magnetic trip unit (for short circuit protection), Standard Breaking Capacity Icu = 55kA, 415V AC, 50 Hz

Frame size	Rated current I _n (A)	3 pole		4 pole		Std. pkg. (nos.)
		Type	Unit MRP* ₹	Type	Unit MRP* ₹	
VL400	400	3VL4740 - 1DE36 - 0AA0	23000.-	3VL4740 - 1EE46 - 0AA0	28145.-	1
VL630	630	3VL5763 - 1DE36 - 0AA0	25745.-	3VL5763 - 1EE46 - 0AA0	29885.-	1
VL800	800	3VL6780 - 1DE36 - 0AA0	40960.-	3VL6780 - 1EE46 - 0AA0	49165.-	1
VL1250	1250	3VL7712 - 1DE36 - 0AA0	68290.-	3VL7712 - 1EE46 - 0AA0	103965.-	1
VL1600	1600	3VL8716 - 1DE30 - 0AA0	109270.-	3VL8716 - 1EE40 - 0AA0	138245.-	1

3VL MCCB, Magnetic trip unit (for short circuit protection), High Breaking Capacity Icu = 70kA, 415V AC, 50 Hz

Frame size	Rated current I _n (A)	3 pole		4 pole		Std. pkg. (nos.)
		Type	Unit MRP* ₹	Type	Unit MRP* ₹	
VL400	400	3VL4740 - 2DE36 - 0AA0	26075.-	3VL4740 - 2EE46 - 0AA0	31530.-	1
VL630	630	3VL5763 - 2DE36 - 0AA0	29799.-	3VL5763 - 2EE46 - 0AA0	36590.-	1
VL800	800	3VL6780 - 2DE36 - 0AA0	49255.-	3VL6780 - 2EE46 - 0AA0	65725.-	1
VL1250	1250	3VL7712 - 2DE36 - 0AA0	89145.-	3VL7712 - 2EE46 - 0AA0	110930.-	1
VL1600	1600	3VL8716 - 2DE30 - 0AA0	112990.-	3VL8716 - 2EE40 - 0AA0	142385.-	1

Fixed overload & fixed short circuit

* MRP - Maximum Retail Price

Siemens switchgear. Tried, tested, trusted.

3VL MCCB, ETU10, LI, Microprocessor based trip unit, Standard breaking capacity Icu = 55kA, 415V AC, 50 Hz

Frame size	Rated current (A)	3 pole		4 pole		Std. pkg. (nos.)
		Type	Unit MRP* ₹	Type	Unit MRP* ₹	
VL 160	63	3VL2706-1SB36-0AA0	16160.-	3VL2706-1TA46-0AA0	21075.-	1
	100	3VL2710-1SB36-0AA0	16160.-	3VL2710-1TA46-0AA0	21075.-	1
	160	3VL2716-1SB36-0AA0	20510.-	3VL2716-1TA46-0AA0	28315.-	1
VL 250	200	3VL3720-1SB36-0AA0	27300.-	3VL3720-1TA46-0AA0	35060.-	1
	250	3VL3725-1SB36-0AA0	27300.-	3VL3725-1TA46-0AA0	35060.-	1
VL 400	315	3VL4731-1SB36-0AA0	28500.-	3VL4731-1TA46-0AA0	37735.-	1
	400	3VL4740-1SB36-0AA0	28500.-	3VL4740-1TA46-0AA0	37735.-	1
VL 630	630	3VL5763-1SB36-0AA0	32035.-	3VL5763-1TA46-0AA0	50720.-	1
VL 800	800	3VL6780-1SB36-0AA0	46370.-	3VL6780-1TA46-0AA0	66035.-	1
VL 1250	1000	3VL7710-1SB36-0AA0	63510.-	3VL7710-1TA46-0AA0	97510.-	1
	1250	3VL7712-1SB36-0AA0	81490.-	3VL7712-1TA46-0AA0	125045.-	1
VL 1600	1600	3VL8716-1SB30-0AA0	108185.-	3VL8716-1TA40-0AA0	146825.-	1

3VL MCCB, ETU10, LI, Microprocessor based trip unit, High breaking capacity Icu = 70kA, 415V AC, 50 Hz

Frame size	Rated current (A)	3 pole		4 pole		Std. pkg. (nos.)
		Type	Unit MRP* ₹	Type	Unit MRP* ₹	
VL 160	63	3VL2706-2SB36-0AA0	19390.-	3VL2706-2TA46-0AA0	24025.-	1
	100	3VL2710-2SB36-0AA0	19390.-	3VL2710-2TA46-0AA0	24025.-	1
	160	3VL2716-2SB36-0AA0	25430.-	3VL2716-2TA46-0AA0	32455.-	1
VL 250	200	3VL3720-2SB36-0AA0	28235.-	3VL3720-2TA46-0AA0	41125.-	1
	250	3VL3725-2SB36-0AA0	28235.-	3VL3725-2TA46-0AA0	41125.-	1
VL 400	315	3VL4731-2SB36-0AA0	29840.-	3VL4731-2TA46-0AA0	45495.-	1
	400	3VL4740-2SB36-0AA0	29840.-	3VL4740-2TA46-0AA0	45495.-	1
VL 630	630	3VL5763-2SB36-0AA0	35480.-	3VL5763-2TA46-0AA0	56480.-	1
VL 800	800	3VL6780-2SB36-0AA0	55080.-	3VL6780-2TA46-0AA0	72355.-	1
VL 1250	1000	3VL7710-2SB36-0AA0	84305.-	3VL7710-2TA46-0AA0	124345.-	1
	1250	3VL7712-2SB36-0AA0	99755.-	3VL7712-2TA46-0AA0	139800.-	1
VL 1600	1600	3VL8716-2SB30-0AA0	120835.-	3VL8716-2TA40-0AA0	155255.-	1

3VL MCCB, ETU12, LIG, Microprocessor based trip unit, Standard breaking capacity Icu = 55kA, 415V AC, 50 Hz

Frame size	Rated current (A)	3 pole		4 pole		Std. pkg. (nos.)
		Type	Unit MRP* ₹	Type	Unit MRP* ₹	
VL 160	63	3VL2706-1SL36-0AA0	18805.-	3VL2706-1TN46-0AA0	23850.-	1
	100	3VL2710-1SL36-0AA0	18805.-	3VL2710-1TN46-0AA0	23850.-	1
	160	3VL2716-1SL36-0AA0	23160.-	3VL2716-1TN46-0AA0	31090.-	1
VL 250	200	3VL3720-1SL36-0AA0	33135.-	3VL3720-1TN46-0AA0	41500.-	1
	250	3VL3725-1SL36-0AA0	33135.-	3VL3725-1TN46-0AA0	41500.-	1
VL 400	315	3VL4731-1SL36-0AA0	35755.-	3VL4731-1TN46-0AA0	46630.-	1
	400	3VL4740-1SL36-0AA0	35755.-	3VL4740-1TN46-0AA0	46630.-	1
VL 630	630	3VL5763-1SL36-0AA0	38815.-	3VL5763-1TN46-0AA0	57845.-	1
VL 800	800	3VL6780-1SL36-0AA0	54635.-	3VL6780-1TN46-0AA0	74720.-	1
VL 1250	1000	3VL7710-1SL36-0AA0	72295.-	3VL7710-1TN46-0AA0	107555.-	1
	1250	3VL7712-1SL36-0AA0	90275.-	3VL7712-1TN46-0AA0	135090.-	1
VL 1600	1600	3VL8716-1SL30-0AA0	116970.-	3VL8716-1TN40-0AA0	156870.-	1

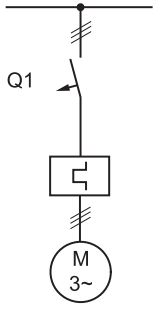
3VL MCCB, ETU12, LIG Microprocessor based trip unit, High breaking capacity Icu = 70kA, 415V AC, 50 Hz

Frame size	Rated current (A)	3 pole		4 pole		Std. pkg. (nos.)
		Type	Unit MRP* ₹	Type	Unit MRP* ₹	
VL 160	63	3VL2706-2SL36-0AA0	22035.-	3VL2706-2TN46-0AA0	26800.-	1
	100	3VL2710-2SL36-0AA0	22035.-	3VL2710-2TN46-0AA0	26800.-	1
	160	3VL2716-2SL36-0AA0	28075.-	3VL2716-2TN46-0AA0	35240.-	1
VL 250	200	3VL3720-2SL36-0AA0	34110.-	3VL3720-2TN46-0AA0	47870.-	1
	250	3VL3725-2SL36-0AA0	34110.-	3VL3725-2TN46-0AA0	47870.-	1
VL 400	315	3VL4731-2SL36-0AA0	38005.-	3VL4731-2TN46-0AA0	54780.-	1
	400	3VL4740-2SL36-0AA0	38005.-	3VL4740-2TN46-0AA0	54780.-	1
VL 630	630	3VL5763-2SL36-0AA0	42255.-	3VL5763-2TN46-0AA0	63605.-	1
VL 800	800	3VL6780-2SL36-0AA0	63345.-	3VL6780-2TN46-0AA0	81040.-	1
VL 1250	1000	3VL7710-2SL36-0AA0	93085.-	3VL7710-2TN46-0AA0	134790.-	1
	1250	3VL7712-2SL36-0AA0	108535.-	3VL7712-2TN46-0AA0	149845.-	1
VL 1600	1600	3VL8716-2SL30-0AA0	129615.-	3VL8716-2TN40-0AA0	165295.-	1

L: Overload protection

I: Short circuit protection

G: Ground fault protection



3VL MCCB for Motor protection (Magnetic trip unit, 3 Pole)

Frame size	Rated current I _n (A)	standard breaking capacity (55 kA, 415V, 50 Hz)		high breaking capacity (70 kA, 415V, 50 Hz)		Std. pkg. (nos.)
		Type	Unit MRP* ₹	Type	Unit MRP* ₹	
VL160	63 A	3VL2706 - 1DK36 - 0AA0	10355.-	3VL2706 - 2DK36 - 0AA0	12905.-	1
	100 A	3VL2710 - 1DK36 - 0AA0	10355.-	3VL2710 - 2DK36 - 0AA0	12905.-	1
	160 A	3VL2716 - 1DK36 - 0AA0	15610.-	3VL2716 - 2DK36 - 0AA0	20025.-	1
VL250	250 A	3VL3725 - 1DK36 - 0AA0	21945.-	3VL3725 - 2DK36 - 0AA0	24915.-	1
VL400	315 A	3VL4731 - 1DK36 - 0AA0	26970.-	3VL4731 - 2DK36 - 0AA0	28145.-	1
VL630	500 A	3VL5750 - 1DK36 - 0AA0	31060.-	3VL5750 - 2DK36 - 0AA0	32445.-	1

Accessories for 3VL

Frame	VL 160 X / VL 160 / VL 250 / VL 400		VL 630 / VL 800 / VL 1250 / VL 1600		Std. pkg. (nos.)
Accessory	Type	Unit MRP* ₹	Type	Unit MRP* ₹	
Auxiliary switch	3VL9 400-2AB00 (1NO + 1NC)	1130.-	3VL9 800-2AC00 (2NO + 2NC)	2090.-	1
Auxiliary switch + Alarm switch	3VL9 400-2AD00 (1NO + 1NC & 1NO)	1750.-	3VL9 800-2AE00 (1NO + 1NC & 1NO)	2430.-	1
Under voltage release 110 V AC 220 - 250 V AC 415 V AC 110 V DC	3VL9 400-1UG00	2680.-	3VL9 800-1UG00	3170.-	1
	3VL9 400-1UH00	2680.-	3VL9 800-1UH00	3170.-	1
	3VL9 400-1UJ00	2680.-	3VL9 800-1UJ00	3170.-	1
	3VL9 400-1UR00	2680.-	3VL9 800-1UR00	3170.-	1
Shunt release 24 V DC 110 - 127 V DC 110 - 127 V AC 208 - 277 V AC	3VL9 400-1SC00	2010.-	3VL9 800-1SC00	2685.-	1
	3VL9 400-1SK00	2010.-	3VL9 800-1SK00	2685.-	1
	3VL9 400-1SR00	2010.-	3VL9 800-1SR00	2685.-	1
	3VL9 400-1ST00	2010.-	3VL9 800-1ST00	2685.-	1
Rotary drive kit (including 8UC handle with door interlock defeat & padlocking facility)	3VL9 .00-3HQ00 ↓ '1 (For VL 160X)	1605.-	3VL9 600-3HQ00 (VL630-VL800)	2630.-	1
	'3 (For VL 160/250)	1630.-	3VL9 800-3HF05 (VL1250-VL1600)	5980.-	1
	'4 (For VL 400)	2170.-			
Castell interlock kit [#] (To interlock two or more circuit breakers)	8UC60 70-1YQ.. (For VL160X/VL160/VL250)	2630.-	8UC60 70-2YQ.. (For VL630/VL800)	2700.-	1
	8UC60 70-2YQ.. (For VL400)	2700.-			
Motorised drive 220-250V AC/DC	3VL9 .00-3MQ00 ↓ 3 (For VL160-VL250)	19320.-	3VL9 .00-3MQ00 ↓ 6 (For VL630-VL800)	32665.-	1
	4 (For VL 400)	25995.-	8 (For VL1250-VL1600)	38355.-	1
Spreader links (with phase barriers)	3VL9216 - 4ED30 (VL160X/VL160-3P)	670.-	3VL9500 - 4ED30 (VL630-3P)	1085.-	1
	3VL9216 - 4ED40 (VL160X/VL160-4P)	825.-	3VL9500 - 4ED40 ^{SS} (VL630-4P)	1320.-	1
	3VL9300 - 4ED30 (VL250-3P)	900.-	3VL9600 - 4ED30 (VL800-3P)	1320.-	1
	3VL9300 - 4ED40 (VL250-4P)	1160.-	3VL9600 - 4ED40 ^{SS} (VL800-4P)	1645.-	1
	3VL9400 - 4ED30 (VL400-3P)	995.-	NA (for VL1250 / VL1600)		1
	3VL9400 - 4ED40 (VL400-4P)	1245.-			1

Note: # The 11th and 12th place of the type reference will indicate the alphabet type of lock & key. Combinations available are A, B, C, D, A-, -B, -C, AB, AC. 11th place will be A, B, C, D for castell lock type A, B, C, D respectively. 11th and 12 place will be A0, 0B, 0C, AB, AC for castell lock type A-, -B, -C, AB, AC respectively

Spreader link 1 set = 3 nos. links and 2 nos. phase barriers in case of 3 pole and 5 nos. links and 3 nos. phase barriers in case of 4 pole, ^{SS} - 4 nos. links and 3 nos. phase barriers in case of 4 pole.

NA - Not Available

Please order in multiples of standard packing.

Betagard Miniature Circuit Breakers

5SX4/5SJ4/5SP4, 10kA with C/D characteristics⁵

240/415V AC, 50...60Hz can be used in systems upto 60VDC, 1P and 110VDC, 2P

Breaking capacity: 10kA as per IS/IEC60898-1; Icu=15kA as per IS13947-2 upto 32A (5SX4)

Icu = 20kA as per IEC60947-2 (5SP4)



	Rated current In (A)	Type C char.	Type D char.	Unit MRP* ₹		Rated current In (A)	Type C char.	Type D char.	Unit MRP* ₹
1 pole	0.5	5SX41057RC	5SX41058RC	#	3 pole	0.5	5SX43057RC	5SX43058RC	#
	1	5SX41017RC	5SX41018RC			1	5SX43017RC	5SX43018RC	
	2	5SX41027RC	5SX41028RC			2	5SX43027RC	5SX43028RC	
	4	5SX41047RC	5SX41048RC			4	5SX43047RC	5SX43048RC	
	6	5SX41067RC	5SX41068RC			6	5SX43067RC	5SX43068RC	
	10	5SX41107RC	5SX41108RC			10	5SX43107RC	5SX43108RC	
	16	5SX41167RC	5SX41168RC			16	5SX43167RC	5SX43168RC	
	20	5SX41207RC	5SX41208RC			20	5SX43207RC	5SX43208RC	
	25	5SX41257RC	5SX41258RC			25	5SX43257RC	5SX43258RC	
	32	5SX41327RC	5SX41328RC			32	5SX43327RC	5SX43328RC	
	40	5SX41407RC	5SJ41408RC			40	5SX43407RC	5SJ43408RC	
	50	5SX41507RC	5SJ41508RC			50	5SX43507RC	5SJ43508RC	
	63	5SX41637RC	5SJ41638RC			63	5SX43637RC	5SJ43638RC	
	80	5SP41807RC	5SP41808RC			80	5SP43807RC	5SP43808RC	
	100	5SP41917RC	5SP41918RC			100	5SP43917RC	5SP43918RC	
125	5SP41927RC	-	125	5SP43927RC	-				
2 pole	0.5	5SX42057RC	5SX42058RC	#	4 pole	0.5	5SX44057RC	5SX44058RC	#
	1	5SX42017RC	5SX42018RC			1	5SX44017RC	5SX44018RC	
	2	5SX42027RC	5SX42028RC			2	5SX44027RC	5SX44028RC	
	4	5SX42047RC	5SX42048RC			4	5SX44047RC	5SX44048RC	
	6	5SX42067RC	5SX42068RC			6	5SX44067RC	5SX44068RC	
	10	5SX42107RC	5SX42108RC			10	5SX44107RC	5SX44108RC	
	16	5SX42167RC	5SX42168RC			16	5SX44167RC	5SX44168RC	
	20	5SX42207RC	5SX42208RC			20	5SX44207RC	5SX44208RC	
	25	5SX42257RC	5SX42258RC			25	5SX44257RC	5SX44258RC	
	32	5SX42327RC	5SX42328RC			32	5SX44327RC	5SX44328RC	
	40	5SX42407RC	5SJ42408RC			40	5SX44407RC	5SX44408RC	
	50	5SX42507RC	5SJ42508RC			50	5SX44507RC	5SX44508RC	
	63	5SX42637RC	5SJ42638RC			63	5SX44637RC	5SJ44638RC	
	80	5SP42807RC	5SP42808RC			80	5SP44807RC	5SP44808RC	
	100	5SP42917RC	5SP42918RC			100	5SP44917RC	5SP44918RC	
125	5SP42927RC	-	125	5SP44927RC	-				

Circuit Breakers

Description	MLFB	Unit MRP* ₹
Rotary Handle Assembly for 5SJ, 5SP, 5SY, 5SL MCBs and 5TE8 Isolators New	5ST38140RC	#



Betagard Auto Transfer Switching Equipment (Prewired) New

Ratings	BASIC VERSION (Without Display)				ADVANCED VERSION (With Display)			
	MLFB				MLFB			
	Double Pole	Unit MRP* ₹	Four Pole	Unit MRP* ₹	Double Pole	Unit MRP* ₹	Four Pole	Unit MRP* ₹
40A	5TR13328RC40	#	5TR13348RC40	#	5TR23328RC40	#	5TR23348RC40	#
63A	5TR13328RC63	#	5TR13348RC63	#	5TR23328RC63	#	5TR23348RC63	#
100A	5TR13327RC81	#	5TR13347RC81	#	5TR23327RC81	#	5TR23347RC81	#
125A	5TR13327RC82	#	5TR13347RC82	#	5TR23327RC82	#	5TR23347RC82	#



Other Products in our Range:

- Betagard DC Circuit Breakers: 0.5-63A, 1P/2P, 220/440VDC, 10kA
- Betagard RCBOs (2P, 2M): 6-40A, 2P, C char, Type AC/A, 10kA
- Betagard RCBOs (MCB+RC unit): 32-63A, 2P/4P, C/D char, Type AC/A, 10kA
- Betagard Distribution Boards

Note :

For MRP, please contact your nearest Siemens partner or refer latest "MRP* List - Electrical Installation A to Z"

Also available: MCBs for Solar Photo voltaic applications. Please contact your nearest Siemens partner for more details.

⁵ C = Instantaneous tripping between 5-10 times rated current (In)
D = Instantaneous tripping between 10-20 times rated current (In)

SIEMENS

Power... When it matters the most!

Betagard Auto Transfer Switching Equipment

Answers for infrastructure.

Siemens Betagard Automatic Transfer Switching Equipment (ATSE) ensures safe automatic transfer of load from the main power source to the back up power and also transfers load to the main supply once the power is restored.

It conforms to IEC 60947-6-1 and is available from 40A to 125A. The most noteworthy feature of the ATSE is that the complete product is prewired and ready to be installed with the provision of touch proof outgoing terminals.

Siemens Betagard ATSE is safe, easy to install and user friendly.

For more details mail to: globalproducts.in@siemens.com



www.siemens.co.in

SIEMENS



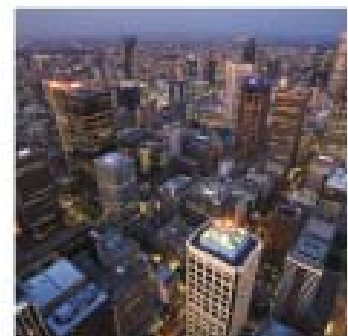
Ring Main Unit 8DJH ST – Quick, safe, compact & reliable power to buildings

Answers for infrastructure.

For use in networks up to 11kV, Siemens 8DJH ST is available in standardized combinations of load break switch and vacuum circuit breaker. Type tested as per the latest IEC 62271-200, the Siemens 8DJH ST is easy to install and safe to operate. With vacuum technology for arc interruption, Siemens ring main unit 8DJH ST is maintenance free for life.

Additionally, gas insulation provides compact construction that saves in excess of 50% space, in comparison to air insulated switchgear.

Siemens 8DJH ST – Enables maximum uptime, total safety, and speedy execution for your buildings.



www.siemens.co.in

Identify energy flows

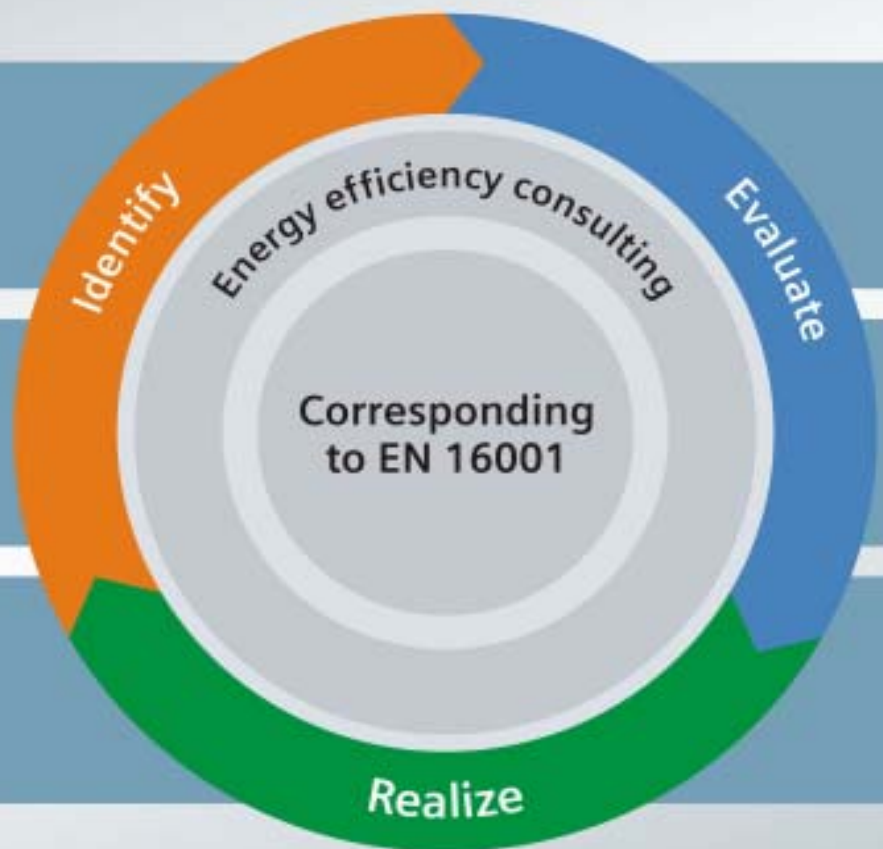
Identify hidden energy-saving potential

Determine cost-saving potential

Evaluate the complete life cycle costs

Concrete measures

Implement and realize the energy-saving potential



Continuous energy management creates enormous savings potential

Integrated, Professional Energy Management Portfolio

Answers for infrastructure.

We offer efficient energy management from one source - from standard solutions to customized applications. The software SENTRON powermanager monitors, processes and archives measured values and shows them clearly laid out. Necessary data & status information are provided by communication-capable components of low-voltage power distribution, e.g. the power monitoring devices SENTRON PAC and the circuit breakers 3WL/3VL & 3WT/ 3VT.

Savings potential can be identified and the availability of energy is ensured due to the transparency in power distribution.



Siemens switchgear. Tried, tested, trusted.

Energy Management System

(A) Hardware Solutions

Complete Range of Power Monitoring Device for LV and HV Network

Common Features of all devices

- IP65 from front
- Inbuilt Digital Inputs (DI) and Digital Outputs (DO)

PAC 3100: Power monitoring device with communication

- Display of instantaneous Maximum and Minimum values
- Measurement of Active & Reactive Power (Import / Export / Net)
- CT polarity reversal correction from the device

Description	Type#	Unit MRP* ₹
PAC 3100 With AC/DC wide voltage power supply and screw terminals 110...240V AC +/- 10% Frequency 50/60Hz, 110...250V DC +/- 10%	7KM3133-0BA00-3AA0	17000.-



RS 485 MODBUS
RTU port inbuilt

PAC 3200: Precise Energy Management Specialist

- Communication over PROFIBUS protocol for the process plant
- Dual Metering function
- Limit Function for Alarms / Tripping

Description	Type#	Unit MRP* ₹
PAC 3200 With AC/DC wide voltage power supply and screw terminals 95...240V AC +/- 10% Frequency 50/60Hz, 110...340V DC +/- 10%	7KM2112-0BA00-3AA0	25000.-



RS 485 port for
Profibus

PAC 4200: Ethernet based Power Quality Analyzer

- High speed Ethernet Interface (up to 100Mbps)
- Reliable event recording with Battery back up
- Built-in sliding window Maximum Demand Controller

Description	Type#	Unit MRP* ₹
PAC 4200 With AC/DC wide voltage power supply and screw terminals 95...240V AC +/- 10% Frequency 50/60Hz, 110...340V DC +/- 10%	7KM4212-0BA00-3AA0	Upon Enquiry



Inbuilt Ethernet
Port for MODBUS
TCP/IP

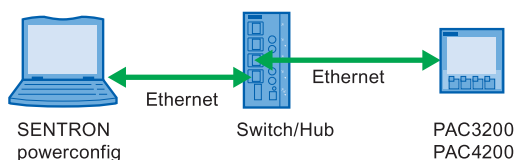
Expansion Modules (for PAC3200 and PAC4200)

Description	Type	Unit MRP * ₹	Std. pkg. (nos.)
SENTRON PAC PROFIBUS DP expansion module	7KM9300-0AB00-0AA0	7500.-	1
SENTRON PAC RS485 expansion module for MODBUS RTU	7KM9300-0AM00-0AA0	6000.-	1

For extra low DC voltage (22 ... 65 V DC ± 10 %) option, please contact your nearest Siemens partners.

(B) Software Solutions

Description	Unit MRP* ₹
Power Config for ONLINE MONITORING of Electrical Parameters	Upon Enquiry
Power Manager : Complete Energy Management Software	Upon Enquiry



Ethernet based Energy Management System

History

Conventional System

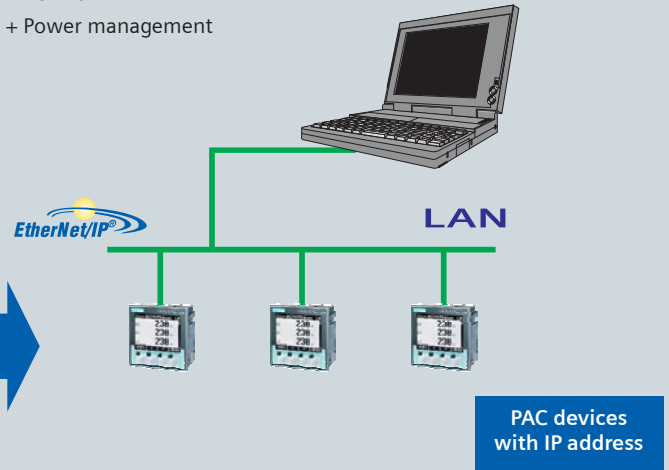


- Limitation of number of devices connected
- Poor refresh time on PC/HMI due to lesser transmission speed (over Modbus RTU network) affects real-time data availability to the EMS
- Failure of Converter leads to data loss of all the devices in EMS

Future

Modular System

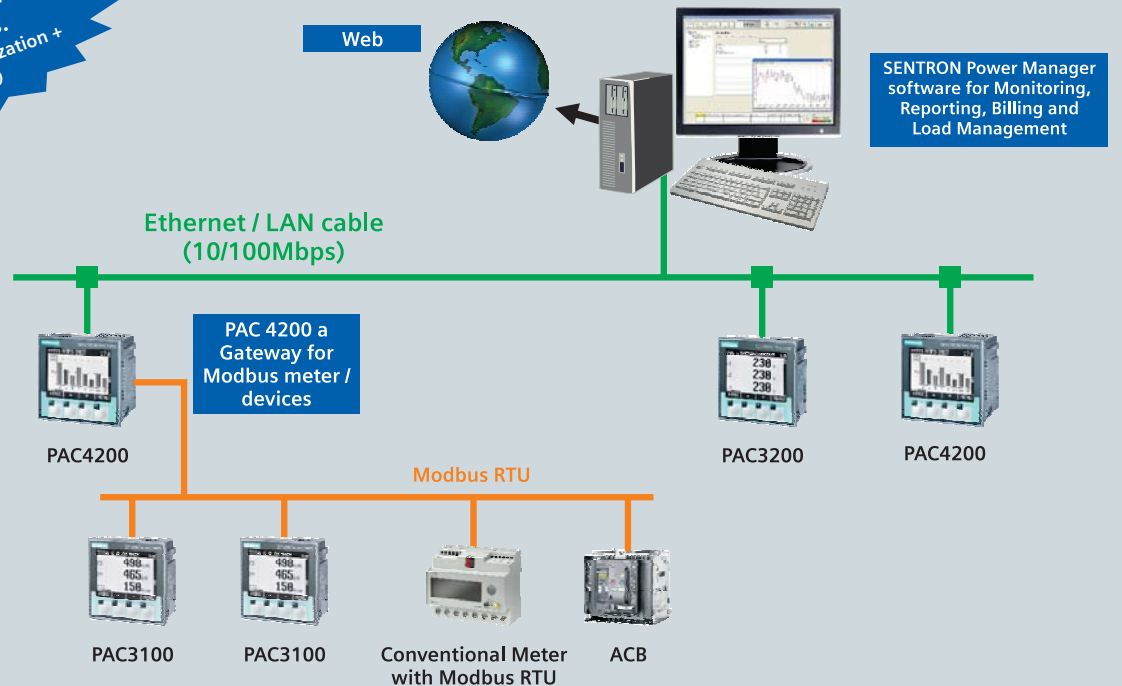
Monitoring
+ Control
+ Power management



- Unlimited no of devices can be connected over Ethernet.
- Unmatched data transmission speed upto 100 Mbps leading to refresh times within few secs on PC
- Intelligent PAC devices with Ethernet connectivity eliminates the need of converters thereby increasing availability of data to EMS

Energy Management Systems for New / Existing users

Save up to 20 %
energy costs.
(Measuring + Visualization +
Controlling)



- EMS Software is In accordance to EN 16001
- Energy and Power Quality Audits.
- Centralized Energy Management for Multi location sites.
- Solutions for Plants & Buildings.
- Cost Allocation and Billing solutions.

Every kWh of Energy saved reduces the Operating Cost of your System and keeps 530 g CO₂[#] out of the environment.

[#] source: IEA & IPCC

Siemens switchgear. Tried, tested, trusted.

Superswitch 3KT/3KL/3KA

- Wide range: upto 800A in SDF/1600A in SD
- Suitable for isolation as per IEC60947
- Suitable for power distribution as well as motor feeders



Switch disconnector fuse: 3KT8* for power distribution (Open Execution TPN)

Rated current I _n @ 440V AC 50Hz	SDF suitable for DIN type HRC Fuses	Unit MRP* ₹	SDF suitable for BS type HRC Fuses	Unit MRP* ₹	SDF suitable for NFC type HRC Fuses	Unit MRP* ₹	Std. Pkg. No.
32A	3KT8121-3HA00	1445.-	3KT8121-3HJ00	1500.-	3KT8121-3HC00	1335.-	1
50A	3KT8141-3HA00	1810.-	3KT8141-3HJ00	1665.-	3KT8141-3HC00	1600.-	1
80A	3KT8161-3HA00	2535.-	3KT8161-3HJ00	2385.-	-	-	1
100A	3KT8211-3HA00	4485.-	3KT8211-3HJ00	4265.-	-	-	1
125A	3KT8221-3HA00	5335.-	3KT8221-3HJ00	5250.-	-	-	1
160A	3KT8231-3HA00	5870.-	3KT8231-3HJ00	5980.-	-	-	1
200A	3KT8311-3UA00	7615.-	3KT8311-3UJ00	7715.-	-	-	1
250A	3KT8321-3UA00	8845.-	3KT8321-3UJ00	8930.-	-	-	1
315A	3KT8331-3UA00	10980.-	3KT8331-3UJ00	11200.-	-	-	1
400A	3KT8341-3UA00	13200.-	3KT8341-3UJ00	13455.-	-	-	1
500A	3KT8411-3UA00	19060.-	3KT8411-3UJ00	19160.-	-	-	1
630A	3KT8421-3UA00	22485.-	3KT8421-3UJ00	22585.-	-	-	1
800A	3KT8431-3UA00	24810.-	3KT8431-3UJ00	24910.-	-	-	1

Switch disconnector fuse: 3KL8^ for power distribution and motor protection (Open Execution TPN)

Rated current I _n @ 690V AC 50Hz	SDF suitable for DIN type HRC Fuses	Unit MRP* ₹	SDF suitable for BS type HRC Fuses	Unit MRP* ₹	SDF suitable for NFC type HRC Fuses	Unit MRP* ₹	Std. Pkg. No.
20A	3KL8111-3HA00	1535.-	3KL8111-3HJ00	1465.-	3KL8111-3HC00	1390.-	1
32A	3KL8121-3HA00	1710.-	3KL8121-3HJ00	1670.-	3KL8121-3HC00	1605.-	1
63A	3KL8151-3HA00	2420.-	3KL8151-3HJ00	2365.-	3KL8151-3HC00	2235.-	1
100A	3KL8211-3HA00	4820.-	3KL8211-3HJ00	4610.-	-	-	1
125A	3KL8221-3HA00	6310.-	3KL8221-3HJ00	5815.-	-	-	1
160A	3KL8231-3HA00	6885.-	3KL8231-3HJ00	6025.-	-	-	1
200A	3KL8311-3UA00	8800.-	3KL8311-3UJ00	8300.-	-	-	1
250A	3KL8321-3UA00	10445.-	3KL8321-3UJ00	9905.-	-	-	1
315A	3KL8331-3UA00	12905.-	3KL8331-3UJ00	12470.-	-	-	1
400A ⁵	3KL8341-3UA00	15555.-	3KL8341-3UJ00	14665.-	-	-	1
500A	3KL8411-3UA00	20540.-	3KL8411-3UJ00	19805.-	-	-	1
630A	3KL8421-3UA00	25000.-	3KL8421-3UJ00	23600.-	-	-	1
800A ⁵	3KL8431-3UA00	27095.-	3KL8431-3UJ00	27400.-	-	-	1

Switch disconnector: 3KA8^ (Open Execution TPN)

Rated current I _n @ 690V AC, 50Hz	Switch Disconnector	Unit MRP* ₹	Std. Pkg. (Nos.)
63A	3KA8151-3HE00	2570.-	1
100A	3KA8211-3HE00	4400.-	1
125A	3KA8221-3HE00	5500.-	1
160A	3KA8231-3HE00	5540.-	1
200A	3KA8311-3UE00	7465.-	1
250A	3KA8321-3UE00	9535.-	1
400A	3KA8341-3UE00	14045.-	1
630A	3KA8351-3UE00	20540.-	1
800A	3KA8431-3UE00	24365.-	1
1000A	3KA8441-3UE00	30450.-	1
1200A [®]	3KA8451-3UE00	38825.-	1
1600A [®]	3KA8461-3UE00	51830.-	1

Switch disconnector fuse in SS Enclosure: 3KL8^ (TPN)

Rated current I _n @ 690V AC, 50Hz	SDF Suitable for DIN Type HRC Fuses	Unit MRP* ₹	Std. Pkg. (Nos.)
20A	3KL8111-3HA10	3250.-	1
32A	3KL8121-3HA10	3450.-	1
63A	3KL8151-3HA10	4250.-	1
100A	3KL8211-3HA10	7000.-	1
125A	3KL8221-3HA10	8300.-	1
160A	3KL8231-3HA10	8900.-	1
200A	3KL8311-3UA10	11750.-	1
250A	3KL8321-3UA10	13450.-	1
315A	3KL8331-3UA10	16000.-	1
400A ⁵	3KL8341-3UA10	18600.-	1
500A	3KL8411-3UA10	25150.-	1
630A	3KL8421-3UA10	29900.-	1
800A ⁵	3KL8431-3UA10	32100.-	1

*3KT8 is rated for 440V, 50Hz, AC22A Utilisation Category. Equivalent AC23A ratings upon Enquiry.

^3KL8/3KA8 is rated for 690V, 50Hz, AC23A Utilisation Category.

\$ Rating AC23A @ 550V, this can be utilised to AC23B @ 690V.

@ rating AC21 at 500V, 50Hz

SS stands for Sheet Steel

*All MRPs are without Fuse.

SS Enclosure for 3KT/3KL/3KA

Current rating	Type	Unit MRP* ₹
20A- 80A	3KX8155-4AC	1620.-
100A-160A	3KX8235-4AC	1890.-
200A-400A	3KX8345-4AC	2415.-
500A-800A	3KX8435-4AC	3555.-



Please note: SDF/SD to be ordered separately.

SS stands for Sheet Steel

2 Pole switch disconnector fuse: 3KL8/3KT8 (Open Execution)

Rated Current Ie @ 440V 50Hz	3KL Type		3KT Type		Std. Pkg. (Nos.)
	SDF suitable for DIN type HRC Fuses	Unit MRP* ₹	SDF suitable for DIN type HRC Fuses	Unit MRP* ₹	
100A	3KL8211-2HA00	4035.-	3KT8211-2HA00	3810.-	1
125A	3KL8221-2HA00	5135.-	3KT8221-2HA00	4575.-	1
160A	3KL8231-2HA00	5330.-	3KT8231-2HA00	4885.-	1
200A	3KL8311-2UA00	6720.-	3KT8311-2UA00	6720.-	1
250A	3KL8321-2UA00	8065.-	3KT8321-2UA00	7775.-	1
315A	3KL8331-2UA00	10270.-	3KT8331-2UA00	9135.-	1
400A	3KL8341-2UA00	12255.-	3KT8341-2UA00	11805.-	1
500A	3KL8411-2UA00	15770.-	3KT8411-2UA00	15620.-	1
630A	3KL8421-2UA00	19795.-	3KT8421-2UA00	18975.-	1
800A	3KL8431-2UA00	22840.-	3KT8431-2UA00	22130.-	1

* All MRPs are without Fuse

Accessories for Superswitch 3KT8/3KL8/3KA8

Description	3KT812/14/16 3KL811/12/15 3KA815	Unit MRP* ₹	3KT821/22/23 3KL821/22/23 3KA821/22/23	Unit MRP* ₹	3KT831/32/33/34 3KL831/32/33/34 3KA831/32/34/35	Unit MRP* ₹	3KT841/42/43 3KL841/42/43 3KA8431/44/45/46	Unit MRP* ₹	Std. Pkg. (Nos.)
Fuse Cover	3KX8150-0AC	195.-	3KX8230-0AC	285.-	3KX8340-0AC	410.-	3KX8430-0AC	590.-	1
Terminal Cover (1 set)			3KX8231-0AC	235.-	3KX8341-0AC	460.-	3KX8431-0AC	540.-	1
Isolable Neutral cover			3KX8232-0AC	115.-	3KX8342-0AC	190.-	3KX8432-0AC	235.-	1
Phase Barrier	3KX8153-0AC	75.-	3KX8233-0AC	75.-	3KX8343-0AC	110.-	3KX8433-0AC	150.-	1
Auxiliary Switch (1NO+1NC)	3SB5400-0A	₹	3KX3522-1YC	360.-	3KX3552-1YC	440.-	3KX3582-1YC	540.-	1
Auxiliary Switch (2NO+2NC)			3KX3522-1YD	655.-	3KX3552-1YD	955.-	3KX3582-1YD	1040.-	1
Auxiliary switch cover	3KX8154-0AC	25.-	3KX8234-0AC	25.-					1
Front Drive (Handle)	8UC68	495.-	8UC68	495.-	8UC63	810.-	8UC64	1185.-	1
Add on Switched 4th Pole	3KX8155-5AC	875.-	3KX3528-1YN	950.-	3KX3558-1YN	1105.-	3KX3588-1YN (3KA8431/44)	1245.-	1
							3KX8465-6AC (3KA845/46)	1245.-	1
Add-on Isolable neutral	3KX8225-6AC (3KL821/22) (3KA821/22)	230.-	3KX8235-6AC (3KL823) (3KA823)	255.-	3KX8335-6AC (3KL831/32/33) (3KA831/32)	430.-	3KX8425-6AC (3KL841/42) (3KA835)	670.-	1
					3KX8345-6AC (3KL834/3KA834)	550.-	3KX8435-6AC (3KL843/3KA843)	845.-	1
Key interlock					3KX3588-1YP..#	1155.-	3KX3588-1YP..#	1155.-	1
Depth setting template					8UC6046	85.-	8UC6046	85.-	1
DIN Rail mounting kit	3KX8155-3AC	985.-							1
Fuse Monitor	3VU1340-1MS00	₹	3VU1340-1MS00	₹	3VU1340-1MS00	₹	3VU1340-1MS00	₹	1
Adapter Plate to replace old 3KL with 3KL8	3KX8155-1AC	260.-							

3KL8 SDF's: Unit MRP*s are inclusive of front drive (Handle) kit, fuse cover, terminal cover / isolable neutral cover, and phase barriers.

3KA SD's: Unit MRP*s are inclusive of front drive (Handle) kit.

3KT SDF's: Unit MRP*s are inclusive of front drive.

SDF's in enclosure are without fuse cover & necessary hardware.

Type of keys are Type A - F depending on the last digit .. to be replaced by letters A - F.

₹ Please refer to Motor Control products Valid MRP

Fuse selection guide For SuperSwitch

Rated current in (A)	SDF type	DIN fuse size	DIN fuse type	BS fuse size	BS fuse type	NFC fuse size
20A	3KL8111	00/000	3NA78	A2/A3	TSA/TIA	14X51
32A	3KL8121	00/000	3NA78	A2/A3	TSA/TIA	14X51
	3KT8121	00/000	3NA78	A2/A3	TSA/TIA/TIS	14X51
50A	3KT8141	00/000	3NA78	A3	TSA/TIA/TIS	14X51
63A	3KL8151	00/000	3NA78	A3	TIS/TSS	14X51
80A	3KT8161	00/000	3NA78	A3	TSDS/TIS/TSS	–
100A	3KL8211	00/000	3NA78	A4	TCP	–
	3KT8211					
125A	3KL8221	00/000	3NA78	A4	TCP/TSFP	–
	3KT8221					
160A	3KL8231	00/000	3NA78	A4	TCP/TSFP	–
	3KT8231					
200A	3KL8311	1 - 2	3NA71, 72	B2/B3/B4	TSF/TF	–
	3KT8311					
250A	3KL8321	1 - 2	3NA71, 72	B2/B3/B4	TSF/TF/TKF/TSK	–
	3KT8321					
315A	3KL8331	1 - 2	3NA72	B2/B3/B4	TSF/TF/TKF/TSK	–
	3KT8331					
400A	3KL8341	1 - 2	3NA72	B2/B3/B4	TSF/TF/TKF/TSK/TMF	–
	3KT8341					
500A	3KL8411	3	3NA33	C1/C2/C3	TTM	–
	3KT8411					
630A	3KL8421	3	3NA33	C1/C2/C3	TTM	–
	3KT8421					
800A	3KL8431	3	3NA33	C1/C2/C3	TSL5	–
	3KT8431					

Load Break Switches

3NP1 Fuse Switch Disconnecter up to 630A

New

- 160-630A in 3- pole versions
- Rated voltage of 690V AC/440V DC
- Suitable for floor & busbar mounting
- With mechanical & electronic fuse monitoring



Floor mounting

Rated current (A)	Suitable for 3NA7/3NA3 size	Connection	Order No.	Unit MRP* ₹
160	000	Box terminal	3NP1123-1CA20	3130.-
160	00 / 000	Flat connector	3NP1133-1CA10	3270.-
160	00 / 000	Box terminal	3NP1133-1CA20	3920.-
250	1 and 0	Flat connector	3NP1143-1DA10	9530.-
250	1 and 0	Box terminal	3NP1143-1DA20	11210.-
400	2 and 1	Flat connector	3NP1153-1DA10	13095.-
400	2 and 1	Box terminal	3NP1153-1DA20	16130.-
630	3 and 2	Flat connector	3NP1163-1DA10	17600.-
630	3 and 2	Box terminal	3NP1163-1DA20	20635.-

40 mm busbar system

Rated current (A)	Suitable for 3NA7/3NA3 size	Connection	Order No.	Unit MRP* ₹
160	000	Box terminal	3NP1123-1BB20	4390.-
160	00 / 000	Flat connector	3NP1133-1BB10	4975.-
160	00 / 000	Box terminal	3NP1133-1BB20	5295.-

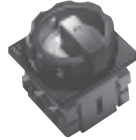
Main control and EMERGENCY STOP switches 3LD

- Rated current range: 16A-250A
- Conforms to IEC 60947-3
- Can be used for motor & power distribution application



Main and EMERGENCY-STOP switches with rotary operating mechanism#

Front mounting - Four holes
Lockable in OFF position with upto 3 padlocks,
Degree of Protection IP65, without auxiliary contacts



Main control and EMERGENCY-STOP switches with selector switch operating mechanism

Front mounting - Four hole mounting
Lockable in OFF position with upto 2 padlocks,
Degree of Protection IP65, without auxiliary contacts
Including terminal cover for incoming side



No of Poles	Rated current (A) Ie AC21A	Motor KW AC 23A, 380....440V, 50...60Hz	Type	Unit MRP* ₹
3	16	7.5	3LD2 003-0TK5.	1190.-
	25	9.5	3LD2 103-0TK5.	1315.-
	32	11.5	3LD2 203-0TK5.	1465.-
	63	22	3LD2 504-0TK5.	2520.-
	100	37	3LD2 704-0TK5.	3820.-
	125	45	3LD2 804-0TK5.	4870.-
	160	75	3LD2 305-0TK1.	Upon enquiry
250	132	3LD2 405-0TK1.	Upon enquiry	

No of Poles	Rated current (A) Ie AC21A	Motor KW AC 23A, 380....440V, 50...60Hz	Type	Unit MRP* ₹
3	16	7.5	3LD2 022-0TK1.	1065.-
	25	9.5	3LD2 122-0TK1.	1165.-
	32	11.5	3LD2 222-0TK1.	1410.-

. - 1: Black
. - 3: Red/yellow

New

. - 1: Black
. - 3: Red/yellow

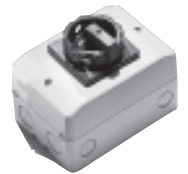
Changeover switches with selector switch operating mechanism

Front mounting - Four hole mounting
Selector switch cannot be locked
Degree of Protection IP65
Black Actuator, without auxiliary contacts



Main control and EMERGENCY-STOP switches

In Moulded plastic enclosures
Lockable in OFF position with upto 3 padlocks,
Degree of Protection IP65,
without auxiliary contacts
with centre hole mounting
with N and/or PE ground terminals



No of Poles	Rated current (A) Ie AC21A	Motor KW AC 23A, 380....440V, 50...60Hz	Type	Unit MRP* ₹
6	25	9.5	3LD2 123-7UK01	2615.-
	32	11.5	3LD2 223-7UK01	2860.-
	63	22	3LD2 524-7UK01	4730.-
	100	37	3LD2 724-7UK01	8800.-

No of Poles	Rated current (A) Ie AC21A	Motor KW AC 23A, 380....440V, 50...60Hz	Type	Unit MRP* ₹
3	16	7.5	3LD2 064-0TB5.	1695.-
	25	9.5	3LD2 164-0TB5.	1845.-
	32	11.5	3LD2 264-0TB5.	2190.-
	63	22	3LD2 565-0TB5.	3625.-
	100	37	3LD2 766-0TB5.	8250.-
	125	45	3LD2 866-0TB5.	14940.-

. - 1: Black
. - 3: Red/yellow

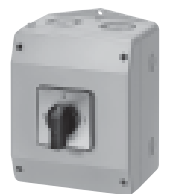
Main and EMERGENCY-STOP switches with door coupling rotary operating mechanism#

Floor mounting with 300mm switch shaft -
Four hole mounting
Lockable in OFF position with upto 3 padlocks,
Degree of Protection IP65, without auxiliary contacts
Including terminal cover for incoming side



Changeover switch with selector switch operating mechanism

In moulded plastic enclosures
Black Actuator
Degree of Protection IP65,
without auxiliary contacts
with N and/or PE ground terminals



No of Poles	Rated current (A) Ie AC21A	Motor KW AC 23A, 380....440V, 50...60Hz	Type	Unit MRP* ₹
3	16	7.5	3LD2 013-0TK5.	1905.-
	25	9.5	3LD2 113-0TK5.	2115.-
	32	11.5	3LD2 213-0TK5.	2335.-
	63	22	3LD2 514-0TK5.	2800.-
	100	37	3LD2 714-0TK5.	4610.-
	125	45	3LD2 814-0TK5.	5755.-
	160	75	3LD2 318-1TL1 .	Upon enquiry
250	132	3LD2 418-1TL1 .	Upon enquiry	

No of Poles	Rated current (A) Ie AC21A	Motor KW AC 23A, 380....440V, 50...60Hz	Type	Unit MRP* ₹
6	25	9.5	3LD2 165-7UB01	3820.-
	32	11.5	3LD2 265-7UB01	4280.-
	63	22	3LD2 566-7UB01	9350.-
	100	37	3LD2 766-7UB01	15440.-

3LD23/24 knob operated mechanism

New

. - 1: Black
. - 3: Red/yellow

* MRP - Maximum Retail Price

Accessories for 3LD

Mounting	Description	For Switch	Type	Unit MRP* ₹
For front mounting	Add on switched 4th pole (N Conductor Leading switch ON, delayed switch OFF)	3LD2 1 and 3LD2 2	3LD9 220-0B	525.-
		3LD2 5	3LD9 250-0BA	780.-
		3LD2 7 and 3LD2 8	3LD9 280-0B	965.-
	N or PE terminal Continuous	3LD2 0	3LD9 200-2B	350.-
		3LD2 1 and 3LD2 2	3LD9 220-2B	395.-
		3LD2 5	3LD9 250-2BA	530.-
		3LD2 7 and 3LD2 8	3LD9 280-2B	650.-
	Auxiliary switches For mounting on left and/or right 1NO+1NC	3LD2 0, 3LD2 1, 3LD2 2, 3LD2 5, 3LD2 7 and 3LD2 8	3LD9 200-5B	585.-
	For floor mounting or 3LD moulded plastic enclosures	Add on switched 4th pole (N Conductor Leading switch ON, delayed switch OFF)	3LD2 1 and 3LD2 2	3LD9 220-0C
3LD2 5			3LD9 250-0CA	780.-
3LD2 7 and 3LD2 8			3LD9 280-0C	965.-
N or PE terminal Continuous		3LD2 0	3LD9 200-2C	475.-
		3LD2 1 and 3LD2 2	3LD9 220-2C	395.-
		3LD2 5	3LD9 250-2CA	530.-
		3LD2 7 and 3LD2 8	3LD9 280-2C	650.-
Auxiliary switches For mounting on left and/or right 1NO+1NC		3LD2 0, 3LD2 1, 3LD2 2, 3LD2 5, 3LD2 7 and 3LD2 8	3LD9 200-5C	555.-
Terminal cover for touch protection can be snapped on at top & bottom for front and floor mounting		4 pole	3LD2 0	3LD9 201-1A
	3 pole	3LD2 1 and 3LD2 2	3LD9 221-0A	160.-
	3 pole	3LD2 5	3LD9 251-0A	180.-
	1 pole	3LD7 and 3LD28	3LD9 281-2A	85.-

Also available: 3LD for Solar Photo voltaic applications. Please contact your nearest Siemens partner for more details.

Motor control switches 3LA0

Description	Motor output 415V, 50Hz, 3Ph kW	Type	Unit MRP* ₹	Std. pkg. (nos.)
Open execution	On/Off	7.5	■ 3LA0 201-1YA	995.- 10
		30	■ 3LA0 601-1YB	2315.- 5
	System selector	5.5	■ 3LA0 202-1YA	1140.- 10
		30	3LA0 602-1YB	3240.- 5
	Reversing	5.5	■ 3LA0 203-1YA	1140.- 10
		30	■ 3LA0 603-1YB	3240.- 5
	Star-delta	12	3LA0 204-5YA	1600.- 10
		30	3LA0 604-1YB	4410.- 5
	2 speed pole changing i) Separate windings ii) Dahlander	5.5	3LA0 205-2YA	1140.- 10
			3LA0 205-1YA	1530.- 10
5.5		3LA0 205-3YA	2205.- 10	
In sheet steel housing	On/Off	7.5	■ 3LA0 221-1YA	1350.- 1
		30	■ 3LA0 621-1YB	3480.- 1
	System selector	5.5	3LA0 222-1YA	1565.- 1
		5.5	■ 3LA0 223-1YA	1850.- 1



Spares & accessories for motor control switches

Description	Type	Unit MRP* ₹	Std. pkg. (nos.)
Ball handle – Black	■ 3LX0 211-1YA	60.-	10
Machine handle – Black	3LX0 611-2YA	160.-	10
Indicating dial for size 2	■ 3LX0 220-1YA	40.-	10
Indicating dial for size 6	■ 3LX0 620-1YA	40.-	10
Catching lever for the drive mechanism of size 2 switch (2 nos. reqd. per switch)	3LY0 220-2YA	40.-	10
Tension spring for the drive mechanism of size 2 switch	3LY0 210-1YA	30.-	10

** All parts supplied loose in polythene bags.

Heavy duty switches 3LA0

No. of poles	Rated current of switch A AC 23A	Open execution		
		Type	MRP* ₹	Std. pkg. (nos.)
2	25#	■ 3LA0 205-4YA	680.-	10
	63	3LA0 605-1YB	1640.-	5
4	25#	■ 3LA0 205-5YA	1140.-	10
	63	■ 3LA0 605-2YB	2990.-	5

AC22A=25A, AC23A = 16A

Control switches 3ST

Switch	Description	Type ^{1), 2)}	Unit MRP* ₹	Std. pkg. (nos.)
2-Pole On-Off	415V, 50Hz/8.5A	■ 3ST1 400-0AF08	350.-	10
3-Pole On-Off		■ 3ST1 400-1AH08	430.-	10
Ammeter selector	0–L1–L2–L3	■ 3ST1 400-2RQ08	635.-	10
Voltmeter selector	0–L1L2–L2L3–L3L1	■ 3ST1 400-1RK08	445.-	10

1) 12th place code '8' represents black knob. Replace it by '9' for red knob.

2) 9th place code 'A' represents rotation < 360°. For 360° rotation, replace it by 'B'

■ Stock items

SIEMENS

Geared up for any situation

LV HRC Fuses: DIN Type

Answers for Infrastructure.

Fuses are the fastest & simplest current limiting devices. With a wide current range, multiple voltage ratings and high short circuit strength, Siemens 3NA fuses are perfectly equipped for overcurrent

protection in buildings & industries. The unique combi- indication enables the user to view the fuse status, easily, even from a distance. With Siemens fuses, protection is easy, safe and reliable.



www.siemens.co.in

Siemens switchgear. Tried, tested, trusted.

HRC fuses (DIN) 3NA

- High Breaking capacity of 120kA
- Dual indication for fault detection
- ISI marked
- Highly compact: upto 100A in size 000



Upto 800A, 500V AC, S.C. breaking capacity 120kA (sym.)

Size	Rated current (A)	Type	Unit MRP* ₹	Std. pkg. (nos.)
000	2	3NA78020RC	240.-	5/10
	4	3NA78040RC	240.-	5/10
	6	3NA78010RC	240.-	5/10
	10	3NA78030RC	240.-	5/10
	16	3NA78050RC	245.-	5/10
	20	3NA78070RC	245.-	5/10
	25	3NA78100RC	245.-	5/10
	32	3NA78120RC	245.-	5/10
	40	3NA78170RC	265.-	5/10
	50	3NA78200RC	265.-	5/10
	63	3NA78220RC	295.-	5/10
	80	3NA78240RC	315.-	5/10
	100	3NA78300RC	315.-	5/10
00	125	3NA78320RC	385.-	5/10
	160	3NA78360RC	405.-	5/10
1	50	3NA71200RC	525.-	1/10
	63	3NA71220RC	525.-	1/10
	80	3NA71240RC	525.-	1/10
	100	3NA71300RC	525.-	1/10
	125	3NA71320RC	545.-	1/10
	160	3NA71360RC	570.-	1/10
	200	3NA71400RC	570.-	1/10
	224	3NA71420RC	590.-	1/10
2	250	3NA71440RC	635.-	1/10
	200	3NA72400RC	790.-	1/10
	250	3NA72440RC	815.-	1/10
	315	3NA72520RC	845.-	1/10
3	400*	3NA72600RC	845.-	1/10
	315	3NA33520RC	1175.-	1/5
	400	3NA33600RC	1175.-	1/5
	500	3NA33650RC	1310.-	1/5
	630	3NA33720RC	1340.-	1/5
800*	3NA33754RC	1625.-	1/5	

* 400A & 800A rated at 415V AC

Isolating links (DIN)

Size	Rated current (A)	Type	Unit MRP* ₹	Std. pkg. (nos.)
00	160	■ 3NG1 000	240.-	1
1	250	■ 3NG1 250	355.-	1
2	400	■ 3NG1 300	580.-	1
3	630	■ 3NG1 400	610.-	1

Fuse bases (DIN)

Size	Rated current (A)	Suitable for fuse link type	Type	Unit MRP* ₹	Std. pkg. (nos.)
00	160	3NA7 8	■ 3NH3 030 (Screw-in connection at both ends)	280.-	1/10
00	160	3NA7 8	■ 3NH3 032 (Plug-in connection at both ends)	295.-	1/10
1	250	3NA7 1	■ 3NH3 230	545.-	1/5
2	400	3NA7 1 & 2	■ 3NH3 330	795.-	1/5
3	630	3NA7 1, 2 & 3	■ 3NH3 430	1080.-	1/5
3	800	3NA7 1, 2 & 3	■ 3NH3 430 - 4RC	1245.-	1/5

Fuse puller

Description	Type	MRP* ₹	Std. pkg. (nos.)
Suitable for 3KL8/3KT8 and all sizes of fuse links/isolating links	■ 3NX1 011	1200.-	1
Suitable only for fuse links and isolating links	3NX1 010	590.-	1

690V AC, S.C. breaking capacity 120kA (sym.)

Size	Rated current (A)	Type	Unit MRP* ₹
00	40	3NA78176RC	325.-
	50	3NA78206RC	325.-
	63	3NA78226RC	345.-
	80	3NA78246RC	370.-
1	100	3NA78306RC	370.-
	125	3NA71326RC	640.-
	160	3NA71366RC	670.-
2	200	3NA71406RC	670.-
	250	3NA72446RC	885.-
3	315	3NA72526RC	950.-
	400	3NA33606RC	1375.-
	425	3NA33626RC	1375.-
500	3NA33656RC	1465.-	

690V AC, S.C. breaking capacity 120kA (sym.)



Size	Rated current (A)	Type	Unit MRP* ₹
000	2A	3NA7 802-6	Upon enquiry
	4A	3NA7 804-6	Upon enquiry
	6A	3NA7 801-6	Upon enquiry
	10A	3NA7 803-6	Upon enquiry
	16A	3NA7 805-6	Upon enquiry
	20A	3NA7 807-6	Upon enquiry
	25A	3NA7 810-6	Upon enquiry
	32A	3NA7 812-6	Upon enquiry
	35A	3NA7 814-6	Upon enquiry

Also available: HRC fuses for Solar Photo voltaic applications. Please contact your nearest Siemens partner for more details.

HRC fuses (BS) 3NW

- 2A-800A
- Rated at 415V AC/240V DC
- Breaking capacity 80kA



Blade tag

Rated current A	Type	Unit MRP* ₹	Std. pkg. (nos.)
2	■ 3NW NS 2	50.-	20
4	■ 3NW NS 4	50.-	20
6	■ 3NW NS 6	50.-	20
10	■ 3NW NS 10	50.-	20
16	■ 3NW NS 16	50.-	20
20	■ 3NW NS 20	60.-	20
25	■ 3NW NS 25	60.-	20
32	3NW NS 32	60.-	20

Offset tag

Rated current A	Type	Unit MRP* ₹	Std. pkg. (nos.)
2	3NW TIA 2	75.-	20
4	3NW TIA 4	75.-	20
6	3NW TIA 6	75.-	20
10	■ 3NW TIA 10	75.-	20
16	■ 3NW TIA 16	75.-	20
20	■ 3NW TIA 20	75.-	20
25	■ 3NW TIA 25	75.-	20
32	■ 3NW TIA 32	75.-	20
40	3NW TIS 40	120.-	20
50	■ 3NW TIS 50	120.-	20
63	■ 3NW TIS 63	120.-	20
80	3NW TCP 80	315.-	10
100	■ 3NW TCP 100	315.-	10
125	3NW TFP 125	485.-	5
160	3NW TFP 160	485.-	5
200	3NW TFP 200	485.-	5

Central tag

Rated current A	Type	Unit MRP* ₹	Std. pkg. (nos.)
80	3NW TC 80	335.-	10
100	3NW TC 100	335.-	10
125	3NW TF 125	530.-	5
160	3NW TF 160	530.-	5
200	3NW TF 200	530.-	5
250	3NW TKF 250	760.-	1
315	3NW TKF 315	760.-	1
355	3NW TMF 355	1050.-	1
400	3NW TMF 400	1050.-	1
500	3NW TTM 500	1650.-	1
630	3NW TTM 630	2190.-	1
710	3NW TLM 710	2500.-	1
800	3NW TLM 800	2500.-	1

Offset tag

Rated current A	Type	Unit MRP* ₹	Std. pkg. (nos.)
6	3NW TSA 6	60.-	20
10	3NW TSA 10	60.-	20
16	3NW TSA 16	60.-	20
20	3NW TSA 20	60.-	20
25	3NW TSA 25	60.-	20
32	3NW TSA 32	60.-	20
36	3NW TSS 36	130.-	20
40	3NW TSS 40	130.-	20
50	3NW TSS 50	130.-	20
63	3NW TSS 63	130.-	20
80	3NW TSDS 80	190.-	20
100	3NW TSDS 100	190.-	20
125	3NW TSFP 125	310.-	5
160	3NW TSFP 160	310.-	5
200	3NW TSFP 200	310.-	5

Central tag

Rated current A	Type	Unit MRP* ₹	Std. pkg. (nos.)
80	3NW TSDC 80	230.-	10
100	3NW TSDC 100	230.-	10
125	3NW TSF 125	315.-	5
160	3NW TSF 160	315.-	5
200	3NW TSF 200	315.-	5
250	3NW TSK 250	570.-	1
315	3NW TSK 315	570.-	1
355	3NW TSMS 355	960.-	1
400	3NW TSMS 400	960.-	1
450	3NW TSTS 450	970.-	1
500	3NW TSTS 500	970.-	1
560	3NW TSL 560	1580.-	1
630	3NW TSL 630	1580.-	1
800	3NW TSL 800	2275.-	1

Fuse holders (for fuses type 3NW TIA, TSA, TIS, TSS, TSDS)

Rated current A	Type	Unit MRP* ₹	Std. pkg. (nos.)
32	3NW CM32F9	900.-	10
63	3NW CM63F9	1050.-	10
100	3NW CM100F9	1160.-	10

Fuse holders (for fuses Type 3NW NS)

Rated current A	Type	Unit MRP* ₹	Std. pkg. (nos.)
20	■ 3NW 20 NNSF	105.-	10
32	■ 3NW 32 NNSF	130.-	10

- Stock items

Please order in multiples of standard packing.

* MRP - Maximum Retail Price

Siemens switchgear. Tried, tested, trusted.

Fuses for semiconductor protection - SITOR 3NE / 3NC

- Current Range upto 1250A
- Operating voltage: 600-2000V AC
- Suitable for mounting in fuse base / SDF / busbars



3NE4 type

Rated voltage V	Rated current (A)	Type	Utilization category	DIN size	Unit MRP* ₹	Std. pkg. (nos.)
1000	32	■ 3NE4 101	gR	1	1115.-	1
	40	■ 3NE4 102	gR	1	1120.-	1
	50	■ 3NE4 117	gR	1	1170.-	1
	80	■ 3NE4 120	aR	1	1270.-	1
	100	■ 3NE4 121	aR	1	1385.-	1
	125	■ 3NE4 122	aR	1	1500.-	1
	160	■ 3NE4 124	aR	1	1645.-	1
800	250	■ 3NE4 327-6	aR	-	3345.-	1
	315	■ 3NE4 330-6	aR	-	3445.-	1
	450	■ 3NE4 333-6	aR	-	3615.-	1
	500	■ 3NE4 334-6	aR	-	3635.-	1
	710	■ 3NE4 337-6	aR	-	3955.-	1

3NE9 type 600 V AC

Rated current (A)	Type	Utilization category	Size	Unit MRP* ₹	Std. pkg. (nos.)
850	3NE9440 - 6	gR	-	11410.-	3
1250	3NE9450	aR	-	10765.-	3

3NE1 type* 690 V AC

Rated current (A)	Type	Utilization category	DIN Size	Unit MRP* ₹	Std. pkg. (nos.)
16	3NE1813 - 0	gS	000	2540.-	3
20	3NE1814 - 0	gS	000	2540.-	3
25	3NE1815 - 0	gS	000	2540.-	3
35	3NE1803 - 0	gS	000	2540.-	3
40	3NE1802 - 0	gS	000	2540.-	3
50	3NE1817 - 0	gS	000	2540.-	3
63	3NE1818 - 0	gS	000	2540.-	3
80	3NE1820 - 0	gS	000	2540.-	3
100	3NE1021 - 0	gS	00	3460.-	3
125	3NE1022 - 0	gS	00	3460.-	3
160	3NE1224 - 0	gS	1	8395.-	3
200	3NE1225 - 0	gS	1	8395.-	3
250	3NE1227 - 0	gS	1	8815.-	3
315	3NE1230 - 0	gS	1	9455.-	3
350	3NE1331 - 0	gS	2	11745.-	3
400	3NE1332 - 0	gS	2	11845.-	3
450	3NE1333 - 0	gS	2	11920.-	3
500	3NE1334 - 0	gS	2	12100.-	3
560	3NE1435 - 0	gS	3	12160.-	3
630	3NE1436 - 0	gS	3	12695.-	3

3NE8 type* 690 V AC

Rated current (A)	Type	Utilization category	Size	Unit MRP* ₹	Std. pkg. (nos.)
25	3NE80151	gR	00	1745.-	3
35	3NE80031	gR	00	1745.-	3
50	3NE80171	gR	00	1745.-	3
63	3NE80181	gR	00	1745.-	3
80	3NE80201	aR	00	1940.-	3
100	3NE80211	aR	00	2025.-	3
125	3NE80221	aR	00	2055.-	3
160	3NE80241	aR	00	2255.-	3

3NE8 type 690 V AC / 700V DC

Rated current (A)	Type	Utilization category	Size	Unit MRP* ₹	Std. pkg. (nos.)
20	3NE87141	gR	000	1590.-	10
25	3NE87151	gR	000	1590.-	10
32	3NE87011	gR	000	1590.-	10
40	3NE87021	gR	000	1590.-	10
50	3NE87171	gR	000	1635.-	10
63	3NE87181	aR	000	1635.-	10
80	3NE87201	aR	000	1710.-	10
100	3NE87211	aR	000	1710.-	10
125	3NE87221	aR	000	1710.-	10
160	3NE87241	aR	000	1785.-	10
200	3NE87251	aR	000	1820.-	10
250	3NE87271	aR	000	1975.-	10
315	3NE87311	aR	000	2600.-	10

* Suitable for mounting on fuse base / 3KL8 / 3NP1

■ Stock items

Please order in multiples of standard packing.

Fuses for semiconductor protection - SITOR 3NE / 3NC

3NE3 type 1000 V AC

Rated current (A)	Type	Utilization category	DIN Size	Unit MRP* ₹	Std. pkg. (nos.)
100	3NE3221	aR	1	5100.-	3
125	3NE3222	aR	1	5240.-	3
160	3NE3224	aR	1	5240.-	3
200	3NE3225	aR	1	5325.-	3
250	3NE3227	aR	1	5465.-	3
315	3NE3230-0B	aR	1	5695.-	3
350	3NE3231	aR	1	6765.-	3
400	3NE3232-0B	aR	1	7245.-	3
450	3NE3 233	aR	1	7500.-	3
400	3NE3332-0B	aR	2	7310.-	3
450	3NE3333	aR	2	7695.-	3
500	3NE3334-0B	aR	2	7845.-	3
560	3NE3335	aR	2	8140.-	3
630	3NE3336	aR	2	8535.-	3
710 [^]	3NE33378	aR	2	12650.-	3
800 [^]	3NE33388	aR	2	13000.-	3
900 [^]	3NE33408	aR	2	15485.-	3
100	3NE3421-0C	aR	3	10650.-	3
224	3NE3626-0C	aR	3	11010.-	3
315	3NE3430-0C	aR	3	11160.-	3
400	3NE3432-0C	aR	3	11815.-	3
450	3NE3635-0C	aR	3	14630.-	3
500	3NE3434-0C	aR	3	15000.-	3
630	3NE3636-0C	aR	3	17360.-	3
710	3NE3637-0C	aR	3	18000.-	3

[^] 710A: 900V AC; 800A: 800V AC; 900A: 690V AC

3NC type 690V AC[#]

Rated current (A)	Type	Utilization category	DIN Size	Unit MRP* ₹	Std. pkg. (nos.)
150	3NC8423-3C	gR	3	6915.-	3
200	3NC8425-3C	gR	3	7545.-	3
250	3NC8427-3C	gR	3	8635.-	3
350	3NC8431-3C	gR	3	8900.-	3
500	3NC8434-3C	gR	3	9625.-	3
1000	3NC8444-3C	aR	3	17530.-	3

[#] 1000A, 600V AC

Utilization category as per VDE 0636/IEC 60269

Semiconductor aR, gR, gS

Cable & Conductor gG

Motor aM

1st letter

a = Partial range of protection (accompanied fuses)

g = Complete range protection (general purpose fuses)

2nd letter

G(-L) = Cable & conductor protection (general purpose fuses)

M = Motor protection

R, S = Semiconductor protection

3NE5 type 1500 V AC

Rated current (A)	Type	Utilization category	DIN Size	Unit MRP* ₹	Std. pkg. (nos.)
160	3NE5424 - 0C	aR	3	14770.-	2
224	3NE5426 - 0C	aR	3	14510.-	2
250	3NE5627 - 0C	aR	3	13645.-	3
315	3NE5430 - 0C	aR	3	18485.-	2
350	3NE5431 - 0C	aR	3	15855.-	2
450	3NE5633 - 0C	aR	3	17865.-	3
600	3NE5643 - 0C	aR	3	18735.-	3

3NE7 type 2000 V AC

Rated current (A)	Type	Utilization category	DIN Size	Unit MRP* ₹	Std. pkg. (nos.)
200	3NE7425 - 0C	aR	3	16170.-	2
250	3NE7427 - 0C	aR	3	15240.-	2
350	3NE7431 - 0C	aR	3	17785.-	2
400	3NE7432 - 0C	aR	3	20830.-	2
450	3NE7633 - 1C	aR	3	24330.-	2
525	3NE7648 - 1C	aR	3	28805.-	2
630	3NE7636 - 1C	aR	3	29295.-	1
710	3NE7637 - 1C	aR	3	29930.-	2

Please order in multiples of standard packing.

Fuseless selection type 2, Iq = 50kA, IS/IEC:60947-4-1

New

- The selection is valid only for complete Siemens combinations i.e. MPCB / MCCB + contactor + bi-relay (+timer)
- In case this combination is changed to accommodate another brand/rating of MPCB/MCCB/contactor/BMR, it shall be the responsibility of the person making such a change to assure Type 2 performance.
- Selection is for **normal starting** conditions with starting time ≤ 6 seconds. (For **heavy starting** applications e.g. ID/FD fans, reciprocating compressor, ball mills etc., please consult Siemens.)
- The electronic star-delta timer type 3RP should be used in star-delta feeders.
- Truly tested Type 2 combinations at neutral authorities
- Low LCC = Low life cycle cost

Direct-on-line feeder, for low LCC

SL motor		Circuit breaker [§]		Contactor		Bi-relay	
kW 415V, 3ph, 50/60 Hz	IL Amp	Type	Amp	Type	Amp	Type (60°C)	Set-Range Amp
0.37	1	3RV10 11-0KA10	1.25	3RT10 15-1AP01	7	#	0.9 - 1.25
0.55	1.3	3RV10 11-1AA10	1.6	3RT10 15-1AP01	7	#	1.1 - 1.6
0.75	1.9	3RV10 11-1BA10	2	3RT10 15-1AP01	7	#	1.4 - 2
1.1	2.6	3RV10 21-1DA10	3.2	3RT10 24-1AL20	12	#	2.2 - 3.2
1.5	3.7	3RV10 21-1EA10	4	3RT10 24-1AL20	12	#	2.8 - 4
2.2	4.8	3RV10 21-1GA10	6.3	3RT10 24-1AL20	12	#	4.5 - 6.3
3.7	7.8	3RV10 21-1JA10	8	3RT10 26-1AL20	25	#	7 - 10
5.5	11.2	3RV10 21-1KA10	12.5	3RT10 26-1AL20	25	#	9 - 12
7.5	16	3RV10 21-4AA10	16	3RT10 26-1AL20	25	#	14 - 20
11	20.8	3RV10 31-4DA10	25	3RT10 34-1AL20	32	#	18 - 25
15	28	3RV10 31-4EA10	32	3RT10 34-1AL20	32	#	22 - 32
18.5	34	3RV10 31-4FA10	40	3RT10 35-1AL20	40	#	28 - 40
22	40	3RV10 31-4HA10	50	3RT10 36-1AL20	50	#	40 - 50
30	53	3RV10 41-4JA10	63	3RT10 44-1AL20	65	#	45 - 63
37	65	3RV10 41-4KA10	75	3RT10 45-1AL20	80	#	57 - 75
45	78	3RV10 41-4LA10	90	3RT10 46-1AL20	95	#	70 - 90
55	96	3RV10 41-4MA10	100	3RT10 54-6LA06	115	#	80 - 100
55	96	3VL27 10-1DK36-0AA0	100	3RT10 54-6LA06	115	3RU11 46-4MB0	80 - 100
75	131	3VL27 16-1DK36-0AA0	160	3RT10 55-6LA06	150	3UR62 30-5AA00-0AA7	85 - 135
90	156	3VL37 25-1DK36-0AA0	250	3RT10 56-6LA06	185	3UR62 30-5BA00-0AA7	115 - 180
110	189	3VL37 25-1DK36-0AA0	250	3RT10 64-6LA06	225	3UR62 30-5CA00-0AA7	160 - 250
132	227	3VL37 25-1DK36-0AA0	250	3RT10 65-6LA06	265	3UR62 30-5CA00-0AA7	160 - 250
160	271	3VL47 31-1DK36-0AA0	315	3RT10 66-6LA06	300	3UR62 30-5DA00-0AA7	200 - 320
200	339	3VL57 50-1DK36-0AA0	500	3RT10 76-6LA06	500	3UR62 30-5EA00-0AA7	250 - 400
250	398	3VL57 50-1DK36-0AA0	500	3RT10 76-6LA06	500	3UR68 30-5FA00-0AA7	320 - 500

§ 3RV11 'relay function' motor protection circuit-breaker can also be used in place of 3RV10 motor protection circuit-breaker.

3RV10 comes with in-built overload protection, hence external bi-relay is eliminated

Star-Delta feeder, for Low LCC

SL motor			Circuit breaker		Contactor line/delta		Contactor star		Bi-relay		Timer
kW 415V, 3ph, 50/60 Hz	IL Amp	Iph A	Type	Amp	Type	Amp	Type	Amp	Type (60°C)	Set-Range Amp	Type
4.0	7.8	4.5	3RV13 21-1HC10	8	3RT10 25-1AL20	17	3RT10 23-1AL20	9	3RU11 26-1FB0	3.5 - 5	3RP15
5.5	11.2	6.5	3RV13 21-4AC10	16	3RT10 26-1AL20	25	3RT10 24-1AL20	12	3RU11 26-1HB0	5.5 - 8	3RP15
7.5	16	9.2	3RV13 21-4BC10	20	3RT10 26-1AL20	25	3RT10 24-1AL20	12	3RU11 26-1JB0	7 - 10	3RP15
11	20.8	12	3RV13 21-4DC10	25	3RT10 34-1AL20	32	3RT10 24-1AL20	12	3RU11 36-4AB0	11 - 16	3RP15
15	28	16.2	3RV13 31-4EC10	32	3RT10 34-1AL20	32	3RT10 24-1AL20	12	3RU11 36-4BB0	14 - 20	3RP15
18.5	34	19.7	3RV13 31-4FC10	40	3RT10 35-1AL20	40	3RT10 24-1AL20	12	3RU11 36-4DB0	18 - 25	3RP15
22	40	23.2	3RV13 31-4GC10	45	3RT10 36-1AL20	50	3RT10 26-1AL20	25	3RU11 36-4EB0	22 - 32	3RP15
30	53	30.6	3RV13 41-4JC10	63	3RT10 44-1AL20	65	3RT10 26-1AL20	25	3RU11 46-4FB0	28 - 40	3RP15
37	65	37.5	3RV13 41-4KC10	75	3RT10 44-1AL20	65	3RT10 34-1AL20	32	3RU11 46-4HB0	36 - 50	3RP15
45	78	45	3RV13 41-4LC10	90	3RT10 45-1AL20	80	3RT10 34-1AL20	32	3RU11 46-4JB0	45 - 63	3RP15
55	96	55.4	3RV13 41-4MC10	100	3RT10 54-6LA06	115	3RT10 44-1AL20	65	3RU11 46-4JB0	45 - 63	3RP15
55	96	55.4	3VL27 10-1DK36-0AA0	100	3RT10 54-6LA06	115	3RT10 44-1AL20	65	3RU11 46-4JB0	45 - 63	3RP15
75	131	75.6	3VL27 16-1DK36-0AA0	160	3RT10 55-6LA06	150	3RT10 44-1AL20	65	3RU11 46-4LB0	70 - 90	3RP15
90	156	90.1	3VL37 25-1DK36-0AA0	250	3RT10 56-6LA06	185	3RT10 44-1AL20	65	3RU11 46-4MB0	80 - 100	3RP15
110	189	109	3VL37 25-1DK36-0AA0	250	3RT10 64-6LA06	225	3RT10 54-6LA06	115	3UR62 30-5AA00-0AA7	85 - 135	3RP15
132	227	131.1	3VL37 25-1DK36-0AA0	250	3RT10 65-6LA06	265	3RT10 54-6LA06	115	3UR62 30-5AA00-0AA7	85 - 135	3RP15
160	271	156.5	3VL47 31-1DK36-0AA0	315	3RT10 66-6LA06	300	3RT10 54-6LA06	115	3UR62 30-5BA00-0AA7	115 - 180	3RP15
200	339	195.7	3VL57 50-1DK36-0AA0	500	3RT10 76-6LA06	500	3RT10 56-6LA06	185	3UR62 30-5CA00-0AA7	160 - 250	3RP15
250	398	229.8	3VL57 50-1DK36-0AA0	500	3RT10 76-6LA06	500	3RT10 65-6LA06	265	3UR62 30-5CA00-0AA7	160 - 250	3RP15

Fuse protected selection type 2, Iq = 50kA, IS/IEC:60947-4-1 New

- The selection is valid only for complete Siemens combinations i.e. SDF + DIN Fuse + Contactor + Bi-relay (+ timer).
- **In case this combination is changed to accommodate another brand/rating of SDF/DIN Fuse/Contactor/BMR, it shall be the responsibility of the person making such a change to assure type 2 performance.**
- Selection is for **normal starting** conditions with starting time ≤ 6 seconds. (For **heavy starting** applications e.g. ID/FD fans, reciprocating compressor, ball mills etc., please consult Siemens.)
- **The electronic star-delta timer type 3RP should be used in star-delta feeders.**
- SDF: Switch Disconnecter Fuse. **All fuses are DIN HRC type.**
- Tested Type 2 combinations
- Low LCC = Low Life Cycle Cost

Direct-on-line feeder, for Low LCC

SL Motor kW 415V, 3ph, 50/60 Hz	Motor IL Amp	SDF		HRC Fuse		Contactor		Bi-Relay	
		Type	Amp	Type	Amp	Type	Amp	Type (60°C)	Set-Range Amp
0.37	1	3KL811	20	3NA78040RC	4	3RT10 15-1AP01	7	3RU11 16-0KB0	0.9 - 1.25
0.55	1.3	3KL811	20	3NA78040RC	4	3RT10 15-1AP01	7	3RU11 16-1AB0	1.1 - 1.6
0.75	1.9	3KL811	20	3NA78010RC	6	3RT10 15-1AP01	7	3RU11 16-1BB0	1.4 - 2
1.10	2.6	3KL811	20	3NA78010RC	6	3RT10 15-1AP01	7	3RU11 16-1DB0	2.2 - 3.2
1.50	3.7	3KL811	20	3NA78030RC	10	3RT10 15-1AP01	7	3RU11 16-1EB0	2.8 - 4
2.20	4.8	3KL811	20	3NA78050RC	16	3RT10 15-1AP01	7	3RU11 16-1GB0	4.5 - 6.3
3.7	7.8	3KL811	20	3NA78070RC	20	3RT10 23-1AL20	9	3RU11 26-1JB0	7 - 10
5.5	11.2	3KL812	32	3NA78100RC	25	3RT10 24-1AL20	12	3RU11 26-1KB0	9 - 12.5
7.5	16	3KL812	32	3NA78120RC	32	3RT10 25-1AL20	17	3RU11 26-4AB0	11 - 16
11	20.8	3KL815	63	3NA78200RC	50	3RT10 26-1AL20	25	3RU11 26-4DB0	20 - 25
15	28	3KL815	63	3NA78220RC	63	3RT10 34-1AL20	32	3RU11 36-4EB0	22 - 32
18.5	34	3KL815	63	3NA78220RC	63	3RT10 35-1AL20	40	3RU11 36-4FB0	28 - 40
22	40	3KL821	100	3NA78240RC	80	3RT10 36-1AL20	50	3RU11 36-4GB0	36 - 45
30	53	3KL821	100	3NA78300RC	100	3RT10 44-1AL20	65	3RU11 46-4JB0	45 - 63
37	65	3KL822	125	3NA78320RC	125	3RT10 45-1AL20	80	3RU11 46-4KB0	57 - 75
45	78	3KL822	125	3NA78320RC	125	3RT10 46-1AL20	95	3RU11 46-4LB0	70 - 90
55	96	3KL823	160	3NA78360RC	160	3RT10 54-6LA06	115	3RU11 46-4MB0	80 - 100
75	131	3KL831	200	3NA71400RC	200	3RT10 55-6LA06	150	3UR62 30-5AA00-0AA7	85 - 135
90	156	3KL832	250	3NA71440RC	250	3RT10 56-6LA06	185	3UR62 30-5BA00-0AA7	115 - 180
110	189	3KL832	250	3NA71440RC	250	3RT10 64-6LA06	225	3UR62 30-5CA00-0AA7	160 - 250
132	227	3KL833	315	3NA72520RC	315	3RT10 65-6LA06	265	3UR62 30-5CA00-0AA7	160 - 250
160	271	3KL834	400	3NA72600RC	400	3RT10 66-6LA06	300	3UR62 30-5DA00-0AA7	200 - 320
200	339	3KL841	500	3NA33650RC	500	3RT10 75-6LA06	400	3UR62 30-5EA00-0AA7	250 - 400
250	398	3KL841	500	3NA33650RC	500	3RT10 76-6LA06	500	3UR68 30-5FA00-0AA7	320 - 500

Star-Delta feeder, for Low LCC

SL Motor kW 415V, 3ph, 50/60Hz	Motor		SDF		HRC Fuses		Contactor Line/Delta		Contactor Star		Bi-Relay		Timer
	IL Amp.	Iph Amp	Type	Amp	Type	Amp	Type	Amp	Type	Amp	Type (60°C)	Set-Range Amp	Type
4	7.8	4.5	3KL811	20	3NA78030RC	10	3RT10 23-1AL20	9	3RT10 23-1AL20	9	3RU11 26-1FB0	3.5 - 5	3RP15
5.5	11.2	6.5	3KL811	20	3NA78050RC	16	3RT10 23-1AL20	9	3RT10 23-1AL20	9	3RU11 26-1HB0	5.5 - 8	3RP15
7.5	16	9.2	3KL811	20	3NA78070RC	20	3RT10 24-1AL20	12	3RT10 23-1AL20	9	3RU11 26-1JB0	7 - 10	3RP15
11	20.8	12	3KL812	32	3NA78100RC	25	3RT10 24-1AL20	12	3RT10 23-1AL20	9	3RU11 26-1KB0	9 - 12.5	3RP15
15	28	16.2	3KL812	32	3NA78120RC	32	3RT10 26-1AL20	25	3RT10 25-1AL20	17	3RU11 26-4BB0	14 - 20	3RP15
18.5	34	19.7	3KL815	63	3NA78200RC	50	3RT10 34-1AL20	32	3RT10 34-1AL20	32	3RU11 36-4BB0	14 - 20	3RP15
22	40	23.2	3KL815	63	3NA78200RC	50	3RT10 34-1AL20	32	3RT10 34-1AL20	32	3RU11 36-4DB0	18 - 25	3RP15
30	53	30.6	3KL815	63	3NA78220RC	63	3RT10 34-1AL20	32	3RT10 34-1AL20	32	3RU11 36-4EB0	22 - 32	3RP15
37	65	37.5	3KL821	100	3NA78240RC	80	3RT10 35-1AL20	40	3RT10 34-1AL20	32	3RU11 36-4FB0	28 - 40	3RP15
45	78	45	3KL821	100	3NA78300RC	100	3RT10 36-1AL20	50	3RT10 34-1AL20	32	3RU11 36-4HB0	40 - 50	3RP15
55	96	55.4	3KL821	100	3NA78300RC	100	3RT10 44-1AL20	65	3RT10 34-1AL20	32	3RU1146-4JB0	45 - 63	3RP15
75	131	75.6	3KL823	160	3NA78360RC	160	3RT10 45-1AL20	80	3RT10 44-1AL20	65	3RU11 46-4LB0	70 - 90	3RP15
90	156	90.1	3KL823	160	3NA78360RC	160	3RT10 46-1AL20	95	3RT10 44-1AL20	65	3RU11 46-4MB0	80 - 100	3RP15
110	189	109	3KL831	200	3NA71400RC	200	3RT10 54-6LA06	115	3RT10 54-6LA06	115	3UR62 30-5AA00-0AA7	85 - 135	3RP15
132	227	131.1	3KL832	250	3NA71440RC	250	3RT10 55-6LA06	150	3RT10 54-6LA06	115	3UR62 30-5BA00-0AA7	115 - 180	3RP15
160	271	156.5	3KL833	315	3NA72520RC	315	3RT10 56-6LA06	185	3RT10 54-6LA06	115	3UR62 30-5BA00-0AA7	115 - 180	3RP15
200	339	195.7	3KL834	400	3NA72600RC	400	3RT10 64-6LA06	225	3RT10 56-6LA06	185	3UR62 30-5CA00-0AA7	160 - 250	3RP15
250	398	229.8	3KL841	500	3NA33650RC	500	3RT10 65-6LA06	265	3RT10 65-6LA06	265	3UR62 30-5CA00-0AA7	160 - 250	3RP15

Siemens switchgear. Tried, tested, trusted.

Fuse protected selection type 2, Iq = 50kA, IS13947-4-1

- The selection is valid only for complete Siemens combinations i.e. SDF + DIN Fuse + Contactor + Bi-relay (+ timer).
- In case this combination is changed to accommodate another brand/rating of SDF/DIN Fuse/Contactor/BMR, it shall be the responsibility of the person making such a change to assure type 2 performance.
- Selection is for normal starting conditions with starting time ≤ 6 seconds. (For heavy starting applications e.g. ID/FD fans, reciprocating compressor, ball mills etc., please consult Siemens.)
- At 60°C service temperature the bi-relay has to be derated. The bi-relay can be used upto the maximum current setting indicated. For example - A bi-relay with setting 32-50A, at 60°C can be used only upto 47A. This however does not mean that at 60°C, the 50A setting corresponds to 47A. It means that, the bi-relay should not be set beyond 47A.
- The electronic star-delta timer type 3RP should be used in star-delta feeders.
- SDF: Switch Disconnecter Fuse. All fuses are DIN HRC type.
- Tested Type 2 combinations
- Low LCC = Low Life Cycle Cost

Direct-on-line feeder, for Low LCC

SL Motor kW 415V, 3ph, 50Hz	Motor I _L Amp	SDF		HRC Fuse		Contactor		Bi-Relay		Bi-Relay	
		Type	Rating	Type	Amp	Type	Amp	Type (50°C)	Set-Range Amp	Type (60°C)	Available Set- Range Amp
0.37	1	3KL811	20	3NA78040RC	4	3TF30	9	3UA5000-0K	0.8 - 1.25	3UA5000-0K	0.8 - 1.17
0.55	1.3	3KL811	20	3NA78040RC	4	3TF30	9	3UA5000-1A	1 - 1.6	3UA5000-1A	1 - 1.5
0.75	1.9	3KL811	20	3NA78010RC	6	3TF30	9	3UA5000-1B	1.25 - 2	3UA5000-1C	1.6 - 2.3
1.1	2.6	3KL811	20	3NA78010RC	6	3TF30	9	3UA5000-1D	2 - 3.2	3UA5000-1D	2 - 3
1.5	3.7	3KL811	20	3NA78030RC	10	3TF30	9	3UA5000-1E	2.5 - 4	3UA5000-1E	2.5 - 3.7
2.2	4.8	3KL811	20	3NA78050RC	16	3TF30	9	3UA5000-1F	3.2 - 5	3UA5000-1G	4 - 5.9
3.7	7.8	3KL811	20	3NA78070RC	20	3TF30	9	3UA5000-1H	5 - 8	3UA5000-1J	6.3 - 9.4
5.5	11.2	3KL812	32	3NA78100RC	25	3TF31	12	3UA5000-1K	8 - 12.5	3UA5000-1K	8 - 11.7
7.5	16	3KL812	32	3NA78120RC	32	3TF32	16	3UA5200-2A	10 - 16	3UA5200-2B	12.5 - 18.7
9.3	19	3KL815	63	3NA78200RC	50	3TF34	32	3UA5500-2B	12.5 - 20	3UA5500-2C	16 - 23.4
11	20.8	3KL815	63	3NA78200RC	50	3TF34	32	3UA5500-2C	16 - 25	3UA5500-2C	16 - 23.4
15	28	3KL815	63	3NA78220RC	63	3TF34	32	3UA5500-2D	20 - 32	3UA5500-2D	20 - 30
18.5	34	3KL815	63	3NA78220RC	63	3TF35	38	3UA5500-2Q	25 - 36	3UA5500-2R	32 - 37.4
22	40	3KL821	100	3NA78240RC	80	3TF46	45	3UA5800-2FZ1	32 - 50	3UA5800-2FZ1	32 - 47
30	53	3KL821	100	3NA78300RC	100	3TF47	63	3UA5800-2TZ1	40 - 57	3UA5800-2PZ1	50 - 59
37	65	3KL822	125	3NA78320RC	125	3TF477	70	3UA5800-2VZ2	57 - 70	3UA5800-2VZ2	57 - 65.5
45	78	3KL822	125	3NA78320RC	125	3TF49	85	3UA5800-8YZ1	70 - 95	3UA5800-8YZ1	70 - 88.9
55	96	3KL823	160	3NA78360RC	160	3TF50	110	3UA5830-5C	85 - 105	3UA5830-5C	85 - 98.2
75	131	3KL831	200	3NA71400RC	200	3TF51	140	3UA6230-5A	85 - 135	3UA6230-5B	115 - 168
90	156	3KL832	250	3NA71440RC	250	3TF52	170	3UA6230-5B	115 - 180	3UA6230-5B	115 - 168
110	189	3KL832	250	3NA71440RC	250	3TF53	205	3UA6230-5C	160 - 250	3UA6230-5C	160 - 234
132	227	3KL833	315	3NA72520RC	315	3TF54	250	3UA6230-5C	160 - 250	3UA6230-5C	160 - 234
160	271	3KL834	400	3NA72600RC	400	3TF55	300	3UA6230-5D	200 - 320	3UA6230-5D	200 - 299
200	339	3KL841	500	3NA33650RC	500	3TF56	400	3UA6230-5E	250 - 400	3UA6230-5E	250 - 374
250	398	3KL841	500	3NA33650RC	500	3TF57	475	3UA6830-5F	320 - 500	3UA6830-5F	320 - 468

Star-Delta feeder, for Low LCC

SL Motor kW 415V, 3ph, 50Hz	Motor		SDF		HRC Fuses		Contactor Line/Delta		Contactor Star		Bi-Relay		Bi-Relay		Timer
	I _L Amp.	I _{ph} Amp	Type	Rating	Type	Amp	Type	Amp	Type	Amp	Type (50°C)	Set-Range Amp	Type (60°C)	Available Set-Range Amp	Type
3.7	7.8	4.5	3KL811	20	3NA78030RC	10	3TF30	9	3TF30	9	3UA5000-1F	3.2-5	3UA5000-1F	3.2-4.7	3RP15
5.5	11.2	6.5	3KL811	20	3NA78050RC	16	3TF30	9	3TF30	9	3UA5000-1H	5-8	3UA5000-1H	5-7.5	3RP15
7.5	16	9.2	3KL811	20	3NA78070RC	20	3TF31	12	3TF30	9	3UA5000-1J	6.3-10	3UA5000-1J	6.3-9.4	3RP15
9.3	19	11	3KL812	32	3NA78100RC	25	3TF31	12	3TF30	9	3UA5000-1K	8-12.5	3UA5000-1K	8-11.7	3RP15
11	20.8	12	3KL812	32	3NA78100RC	25	3TF31	12	3TF30	9	3UA5000-1K	8-12.5	3UA5000-2S	10-13.6	3RP15
15	28	16.2	3KL812	32	3NA78120RC	32	3TF33	22	3TF32	16	3UA5200-2B	12.5-20	3UA5200-2B	12.5-18.7	3RP15
18.5	34	19.7	3KL815	63	3NA78200RC	50	3TF34	32	3TF34	32	3UA5500-2B	12.5-20	3UA5500-2C	16-23.4	3RP15
22	40	23.2	3KL815	63	3NA78200RC	50	3TF34	32	3TF34	32	3UA5500-2C	16-25	3UA5500-2D	22-30	3RP15
30	53	30.6	3KL815	63	3NA78220RC	63	3TF34	32	3TF34	32	3UA5500-2D	20-32	3UA5500-2Q	25-33.7	3RP15
37	65	37.5	3KL821	100	3NA78240RC	80	3TF35	38	3TF34	32	3UA5500-2R	32-40	3UA5500-8M	36-45	3RP15
45	78	45	3KL821	100	3NA78300RC	100	3TF46	45	3TF34	32	3UA5800-2FZ1	32-50	3UA5800-2FZ1	32-47	3RP15
55	96	55.4	3KL821	100	3NA78300RC	100	3TF47	63	3TF34	32	3UA5800-2TZ1	40-57	3UA5800-2PZ1	50-59	3RP15
75	131	75.6	3KL823	160	3NA78360RC	160	3TF49	85	3TF47	63	3UA5800-8YZ1	70-95	3UA5800-8YZ1	70-88.9	3RP15
90	156	90.1	3KL823	160	3NA78360RC	160	3TF50	110	3TF47	63	3UA5830-5B	70-95	3UA5830-5C	85-98.2	3RP15
110	189	109	3KL831	200	3NA71400RC	200	3TF50	110	3TF50	110	3UA5830-5D	95-120	3UA5830-5D	95-112	3RP15
132	227	131.1	3KL832	250	3NA71440RC	250	3TF51	140	3TF50	110	3UA6230-5B	115-180	3UA6230-5B	115-168	3RP15
160	271	156.5	3KL833	315	3NA72520RC	315	3TF52	170	3TF50	110	3UA6230-5B	115-180	3UA6230-5B	115-168	3RP15
200	339	195.7	3KL834	400	3NA72600RC	400	3TF54	250	3TF52	170	3UA6230-5C	160-250	3UA6230-5C	160-234	3RP15
250	398	229.8	3KL841	500	3NA72600RC	400	3TF54	250	3TF54	250	3UA6230-5C	160-250	3UA6230-5D	200-299	3RP15

Fuseless selection type 2, Iq = 50kA, IS13947-4-1

- The selection is valid only for complete Siemens combinations i.e. MPCB / MCCB + contactor + bi-relay (+timer)
- In case this combination is changed to accommodate another brand/rating of MPCB/MCCB/contactor/BMR, it shall be the responsibility of the person making such a change to assure Type 2 performance.
- Selection is for **normal starting** conditions with starting time ≤ 6 seconds. (For **heavy starting** applications e.g. ID/FD fans, reciprocating compressor, ball mills etc., please consult Siemens.)
- The electronic star-delta timer type 3RP should be used in star-delta feeders.
- Truly tested Type 2 combinations at neutral authorities
- Low LCC = Low life cycle cost

Direct-on-line feeder, for low LCC

SL motor		Circuit breaker		Contactor		Bi-relay	
kW 415V, 3ph, 50Hz	IL A	Type	A	Type	A	Type (50°C)	Range (A)
0.37	1	3RV11 21-0KA10	1.25	3TF30	9	#	0.9 - 1.25
0.55	1.3	3RV11 21-1AA10	1.6	3TF30	9	#	1.1 - 1.6
0.75	1.9	3RV11 21-1BA10	2	3TF30	9	#	1.4 - 2
1.1	2.6	3RV11 21-1DA10	3.2	3TF31	12	#	2.2 - 3.2
1.5	3.7	3RV11 21-1EA10	4	3TF32	16	#	2.8 - 4
2.2	4.8	3RV11 21-1FA10	5	3TF32	16	#	3.5 - 5
3.7	7.8	3RV11 21-1HA10	8	3TF32	16	#	5.5 - 8
5.5	11.2	3RV11 21-1KA10	12.5	3TF34	32	#	9 - 12.5
7.5	16	3RV11 21-4BA10	20	3TF34	32	#	11 - 16
9.3	19	3RV11 21-4BA10	20	3TF34	32	#	14 - 20
11	20.8	3RV11 21-4CA10	22	3TF34	32	#	17 - 22
15	28	3RV11 31-4EA10	32	3TF35	38	#	22 - 32
18.5	34	3RV11 31-4FA10	40	3TF46	45	#	28 - 40
22	40	3RV11 31-4HA10	50	3TF48	75	#	36 - 45
30	53	3RV11 42-4JA10	63	3TF48	75	#	45 - 63
37	65	3RV11 42-4KA10	75	3TF50	110	#	57 - 75
45	78	3RV11 42-4LA10	90	3TF50	110	#	70 - 90
55	96	3RV11 42-4MA10	100	3TF52	170	#	80 - 100
75	131	3VL27 16-1DK36-0AA0	160	3TF52	170	3UA62 30-5A	85-135
90	156	3VL37 25-1DK36-0AA0	250	3TF53	205	3UA62 30-5B	115-180
110	189	3VL37 25-1DK36-0AA0	250	3TF53	205	3UA62 30-5C	160 - 250
132	227	3VL37 25-1DK36-0AA0	250	3TF54	250	3UA62 30-5C	160 - 250
160	271	3VL47 31-1DK36-0AA0	315	3TF55	300	3UA62 30-5D	200 - 320
200	339	3VL57 50-1DK36-0AA0	500	3TF57	475	3UA62 30-5E	250 - 400
250	398	3VL57 50-1DK36-0AA0	500	3TF57	475	3UA68 30-5F	320 - 500

#3RV11 comes with integral relay function, hence external birelay is eliminated.

(3RV10 MPCB with 'standard release' can also be used.)

Star-delta feeder, for low LCC

SL motor			Circuit breaker		Contactor line/delta		Contactor star		Bi-relay		Timer
kW 415V, 3ph, 50Hz	IL A	Iph A	Type	A	Type	A	Type	A	Type (50°C)	Range (A)	Type
3.7	7.8	4.5	3RV13 21-1HC10	8	3TF32	16	3TF30	9	3UA52 00-1F	3.2 - 5	3RP15
5.5	11.2	6.5	3RV13 21-1KC10	12.5	3TF34	32	3TF30	9	3UA52 00-1H	5 - 8	3RP15
7.5	16	9.2	3RV13 21-4AC10	16	3TF34	32	3TF30	9	3UA52 00-1J	6.3 - 10	3RP15
9.3	19	11	3RV13 21-4CC10	22	3TF34	32	3TF30	9	3UA52 00-1K	8 - 12.5	3RP15
11	20.8	12	3RV13 21-4CC10	22	3TF34	32	3TF30	9	3UA52 00-1K	8 - 12.5	3RP15
15	28	16.2	3RV13 31-4EC10	32	3TF35	38	3TF32	16	3UA52 00-2B	12.5 - 20	3RP15
18.5	34	19.7	3RV13 31-4FC10	40	3TF46	45	3TF34	32	3UA52 00-2C	16 - 25	3RP15
22	40	23.2	3RV13 31-4GC10	45	3TF48	75	3TF34	32	3UA52 00-2C	16 - 25	3RP15
30	53	30.6	3RV13 41-4JC10	63	3TF48	75	3TF34	32	3UA55 00-2D	20 - 32	3RP15
37	65	37.5	3RV13 41-4KC10	75	3TF50	110	3TF34	32	3UA55 00-2R	32 - 40	3RP15
45	78	45	3RV13 41-4LC10	90	3TF50	110	3TF34	32	3UA55 00-8M	36 - 45	3RP15
55	96	55.4	3RV13 41-4MC10	100	3TF52	170	3TF34	32	3UA58 00-2TZ1	40 - 57	3RP15
75	131	75.6	3VL27 16-1DK36-0AA0	160	3TF52	170	3TF47	63	3UA58 00-8YZ1	70 - 95	3RP15
90	156	90.1	3VL37 25-1DK36-0AA0	250	3TF53	205	3TF47	63	3UA58 30-5B	70 - 95	3RP15
110	189	109	3VL37 25-1DK36-0AA0	250	3TF53	205	3TF50	110	3UA58 30-5D	95 - 120	3RP15
132	227	131.1	3VL37 25-1DK36-0AA0	250	3TF54	250	3TF50	110	3UA62 30-5B	115 - 180	3RP15
160	271	156.5	3VL47 31-1DK36-0AA0	315	3TF55	300	3TF50	110	3UA62 30-5B	115 - 180	3RP15
200	339	195.7	3VL57 50-1DK36-0AA0	500	3TF57	475	3TF52	170	3UA62 30-5C	160 - 250	3RP15
250	398	229.8	3VL57 50-1DK36-0AA0	500	3TF57	475	3TF54	250	3UA62 30-5D	160 - 250	3RP15

Fuseless selection type 2, Iq = 50kA, IS/IEC:60947-4-1

New


- The selection is valid only for complete Siemens combinations i.e. MPCB / MCCB + contactor + bi-relay (+timer)
- In case this combination is changed to accommodate another brand/rating of MPCB/MCCB/contactor/BMR, it shall be the responsibility of the person making such a change to assure Type 2 performance.
- Selection is for **normal starting** conditions with starting time ≤ 6 seconds. (For **heavy starting** applications e.g. ID/FD fans, reciprocating compressor, ball mills etc., please consult Siemens.)
- The electronic star-delta timer type 3RP should be used in star-delta feeders.
- Truly tested Type 2 combinations at neutral authorities
- Low LCC = Low life cycle cost

Direct-on-line feeder, for low LCC

SL motor		Circuit breaker		Contactor		Bi-relay	
kW 415V, 3ph, 50/60 Hz	IL Amp	Type	Amp	Type	Amp	Type (60°C)	Set-Range Amp
3.7	7.8	3RV13 21-1HC10	8	3RT10 26-1AL20	25	3RU11 26-1JB0	7 - 10
5.5	11.2	3RV13 21-1JC10	13	3RT10 26-1AL20	25	3RU11 26-1KB0	9 - 12.5
7.5	16	3RV13 21-4AC10	16	3RT10 26-1AL20	25	3RU11 26-4BB0	14 - 20
11	20.8	3RV13 31-4DC10	25	3RT10 34-1AL20	32	3RU11 26-4DB0	20 - 25
15	28	3RV13 31-4EC10	32	3RT10 34-1AL20	32	3RU11 36-4EB0	22 - 32
18.5	34	3RV13 31-4FC10	40	3RT10 35-1AL20	40	3RU11 36-4FB0	28 - 40
22	40	3RV13 31-4HC10	50	3RT10 36-1AL20	50	3RU11 36-4GB0	36 - 45
30	53	3RV13 41-4JC10	63	3RT10 44-1AL20	65	3RU11 46-4JB0	45 - 63
37	65	3RV13 41-4KC10	75	3RT10 45-1AL20	80	3RU11 46-4KB0	57 - 75
45	78	3RV13 41-4LC10	90	3RT10 46-1AL20	95	3RU11 46-4LB0	70 - 90
55	96	3RV13 41-4MC10	100	3RT10 54-6LA06	115	3RU11 46-4MB0	80 - 100
55	96	3VL27 10-1DK36-0AA0	100	3RT10 54-6LA06	115	3RU11 46-4MB0	80 - 100
75	131	3VL27 16-1DK36-0AA0	160	3RT10 55-6LA06	150	3UR62 30-5AA00-0AA7	85 - 135
90	156	3VL37 25-1DK36-0AA0	250	3RT10 56-6LA06	185	3UR62 30-5BA00-0AA7	115 - 180
110	189	3VL37 25-1DK36-0AA0	250	3RT10 64-6LA06	220	3UR62 30-5CA00-0AA7	160 - 250
132	227	3VL37 25-1DK36-0AA0	250	3RT10 65-6LA06	265	3UR62 30-5CA00-0AA7	160 - 250
160	271	3VL47 31-1DK36-0AA0	315	3RT10 66-6LA06	300	3UR62 30-5DA00-0AA7	200 - 320
200	339	3VL57 50-1DK36-0AA0	500	3RT10 76-6LA06	500	3UR62 30-5EA00-0AA7	250 - 400
250	398	3VL57 50-1DK36-0AA0	500	3RT10 76-6LA06	500	3UR68 30-5FA00-0AA7	320 - 500

Available till stocks last

Accessories for 3VT1...5

Accessory		3VT1 Type	Unit MRP* ₹	3VT2 Type	Unit MRP* ₹	3VT3 Type	Unit MRP* ₹	3VT4/5 Type	Unit MRP* ₹
	Panel door mounted rotary operating handle (below four parts should be ordered together)								
	Knob	3VT9100-3HE20	160.-	3VT9300-3HE20	255.-	3VT9300-3HE20	255.-	3VT9500-3HE10	440.-
	Coupler	3VT9100-3HG10	255.-	3VT9300-3HG10	285.-	3VT9300-3HG10	285.-	3VT9500-3HG10	500.-
	Mechanism	3VT9100-3HA20	760.-	3VT9200-3HA20	945.-	3VT9300-3HA20	1070.-	3VT9500-3HA10	2520.-
	Ext Shaft	3VT9100-3HJ10	125.-	3VT9300-3HJ10	160.-	3VT9300-3HJ10	160.-	3VT9500-3HJ10	315.-

For information on prices of below products please refer to the
Low Voltage Motor Control Products valid MRP



Terms and conditions

Maximum Retail Price

MRPs are subject to revision without prior notice.

The company reserves the right to supply goods at its works or godown at its discretion.

The minimum order size for non-stock items (items not marked with ■) is 50 Nos. for each item or ₹ 50,000/- per item.

Export control regulation - retention clause: The fulfillment of the agreement on Siemens part is subject to the provision that this shall not be prevented by implements on the grounds of national and international legal requirements, in particular export control provision.

Stock items

The normal stock items (indicated by ■) are subject to change without prior notice.

Note

- This supercedes all previous Price Lists
- MRPs mentioned in this publication are max. recommended selling MRPs.
- For receiving material in factory sealed packing, we request you to order in multiples of the indicated standard packing quantity.

Ask your nearest Siemens partners to include you in our mailing list.

Always make your purchases only from our authorised dealers. Details available with our sales office/territory managers.

Your partners

Sales offices:

Ahmedabad

3rd Floor, Prerna Arbur
Girish Cold Drinks Cross Roads, Off G.C.Road
Ahmedabad - 380 009
☎ : +91 79 30927600
Fax: +91 79 30927699

Baroda

3rd Floor, OHM Business Park
Opp:Balaji Hospital, Ellora Park, Shubhanpura
Baroda - 390 023, Gujarat
☎ : +91 265 3039100
Fax: +91 265 3039190

Bengaluru

1st Floor, Jyoti Mahal, No. 49, St. Marks Road
Bengaluru - 560 001
☎ : +91 80 33422000
Fax: +91 80 33424131

Bhubaneswar

Creative Plaza, 3rd Floor, Mouza Bomikhal
(Rasulgarh Square), PS Mancheswar
Bhubaneswar - 751 010, Orissa
☎ : +91 98300 05795

Territory managers:

Aurangabad

A9, Yogeshwari Vrundavan, Nr. Malhar Chowk
Garkheda Parisar, Prem Nagar
Aurangabad - 431210, Maharashtra
Mobile: +91 9766316446
E-mail: santosh.rajhans@siemens.com

Belgaum

H.No.713, Narvekar Lane, Shahpur
Belgaum - 590003, Karnataka
☎ : +91 0831 2495156
Mobile: +91 9740277991
E-mail: anand.gawade@siemens.com

Bhopal

Flat No-104, Sagar Home Phase-2
Sarvadharm Society, Nayapura Road
Bhopal - 462042, Madhya Pradesh
Mobile: +91 9977228084
E-mail: prajwal.khapekar@siemens.com

Calicut

Door No. 19/C - 192 CPM House
Naderi (PO), Koyilandy (via)
Calicut - 673326
☎ : +91 9645963636
E-mail: ragesh.ri@siemens.com

Cochin

K.G.Oxford Business Centre
3A, Shreekandath Rd, Ravipuram
Cochin - 682016
☎ : +91 4028611/22
Mobile: +91 9387384848
E-mail: sudheer.ts@siemens.com

Cochin

K.G.Oxford Business Centre
3A, Shreekandath Rd, Ravipuram
Cochin - 682016
Mobile: +91 9744511109
E-mail: sajeen.s@siemens.com

Dehradun

32, Dhronpuri, Main Lane, G.M.S.Road
Dehradun - 248001, Uttarakhand
☎ : +91 135 2528212
Mobile: +91 8650404404
E-mail: shashibhushan.prasad@siemens.com

Durg

Pancham Nivas, B-1, Zone-2, New Adarsh Nagar
Durg - 491001, Chhattisgarh
Mobile: +91 9425016197
E-mail: jitendra.potdar@siemens.com

Durgapur

14, Dinabandhu Mitra Path
Near Kavi Guru Middle Stop
SAIL Co-Operative Area, City Centre
Durgapur - 713216
Mobile: +91 9874343052
E-mail: rana.mitra@siemens.com

Goa

435/10, F2 Bhanumati Bunglow
Opp. Sapna Habitat, Chogum Road, Porvorim
Bardez, Goa - 403521
☎ : +91 9860053365
E-mail: mitul.kapadia@siemens.com

Chandigarh

SCO 188/191, 3rd Floor, Sector-17 C
Chandigarh - 160 017
☎ : +91 172 4690300
Fax: +91 172 4690399

Chennai

Sathak Centre, No.4., Mahatma Gandhi Road
Chennai - 600034
☎ : +91 44 30474000
Fax: +91 44 30474088

Coimbatore

7th Floor, Global Towers
1057, Avinash Road
Coimbatore - 641 018
☎ : +91 422 3076300
Fax: +91 422 3076310

Hyderabad

5-9-19, 4th & 5th Floor, Laxmi Narasinh Estate
Opp. Secretariat Road, Saifabad
Hyderabad - 500 004
☎ : +91 40 30922500
Fax: +91 40 30923145

Guwahati

House No. 20, Ushanagar, Dispur Supermarket
Guwahati, Assam - 781006
☎ : 0361-2230836
Fax: 0361-2230836
Mobile: +91 9864110684
E-mail: biplab.datta@siemens.com

Haridwar

6, Nand Puri, Near Arya Nagar Chowk, Jwalapur
Hardwar - 249408, Uttarakhand
☎ : +91 1334 251943
Mobile: +91 9897070133
E-mail: ankur.singh@siemens.com

Haridwar

47, Abhisek Nagar, Kankhal
Haridwar - 249408, Uttarakhand
Mobile: +91 9621083333
E-mail: kumar.pradeep@siemens.com

Hubli

24, 1st Floor, 2nd Cross Street
Kadeswar Colony, Kheswapur
Hubli - 580023, Karnataka
☎ : +91 836 2252947
Mobile: +91 9880662047
E-mail: balajim@siemens.com

Indore

Flat No.102, Panchavati Apart.
40 Chandralok Colony, Khajrana Road
Indore - 452001, Madhya Pradesh
Mobile: +91 9926939993
E-mail: prashant.joshi@siemens.com

Jalandhar

H.No.943, Urban Estate, Phase I
Jalandar - 144022, Punjab
☎ : +91 0181 4613929
Mobile: +91 9876047929
E-mail: sunil.singla@siemens.com

Jamshedpur

823, Udaigiri Vijaya Heritage, Uliyan, Kadma
Jamshedpur - 831005, Jharkhand
☎ : +91 657 6451637
Mobile: +91 9934311352
E-mail: shaibal.parial@siemens.com

Jodhpur

371, Gauri House
Kamala Nehru Nagar, Nr. SBI Bank
Jodhpur - 342008, Rajasthan
☎ : +91 291 2760371
Mobile: +91 9828327200
E-mail: naveen.sahariya@siemens.com

Kanpur

Flat No.403, Gulmohar Garden Phase II
Nr. Mariampur Hosp., Chain Factory, Shastri Nagar
Kanpur - 208005
Mobile: +91 8009900939
E-mail: shagun.gupta@siemens.com

Kolhapur

Flat No.101, Shrushti Mahabharat Apartment,
Mahavir Garden To Mahavir College Road
Nagala Park, Kolhapur - 416003
☎ : +91 231 2663330
Mobile: +91 9881465421
E-mail: sachin.chavan@siemens.com

Jaipur

6, Park Street, Opp. Pink City Petrol Pump, M.I.Road
Jaipur - 302 006, Rajasthan
☎ : +91 141 5152108
Fax: +91 141 2370482

Kolkata

43, Shanti Palli, RashBehari Connector
Eastern Metropolitan Bypass
Kolkata - 700 042
☎ : +91 33 30939000
Fax: +91 33 30939010, 30939013

Lucknow

28/45, Ashok Marg, Opp. Indira Bhawan
Lucknow - 226001
☎ : +91 522 4031022, 4031000
Fax: +91 522 4031019

Mumbai

Business Centre-1
Thane Belapur Road
Thane - 400 601
☎ : +91 22 39663000
Fax: +91 22 39663721

Ludhiana

H.No.92, Lajpat Nagar, Near Bus Stand
Ludhiana - 141002, Punjab
☎ : +91 0161 2770574
Mobile: +91 9815502480
E-mail: rohit.jagga@siemens.com

Ludhiana

H.No. D-29, New Kitchlu Nagar
Ludhiana
Mobile: +91 9878098612
E-mail: amitoj.singh@siemens.com

Ludhiana

H.No.30, 1st Floor, Gobind Nagar, Pakhowal Road
Ludhiana - 141013, Punjab
Mobile: +91 9888484066
E-mail: padam.sharma@siemens.com

Madurai

Anirudh Block F-Top 3, Vasudhara Apartment
84, TPK Main Road, Andalpuram
Madurai - 625003, Tamil Nadu
Mobile: +91 9894617776
E-mail: sivaprakasam.r@siemens.com

Nashik

"Aditya Avenue", Flat No.27, 4th Floor B-Wing
Near Chandak Circle, Tidke Colony
Nasik - 422001, Maharashtra
Mobile: +91 9822193204
E-mail: kiran.kanhurkar@siemens.com

Nashik

A-12, Eshwar Park, Behind Nasik Cambridge School
Opp. Church, Indira Nagar
Nasik - 422009
Mobile: +91 9823477735
E-mail: ramshankar.chaudhari@siemens.com

Pondicherry

"Raghavendra ILLAM", Gnd Floor, No 21
3rd Cross Street, Anna Nagar
Pondicherry - 605005
Mobile: +91 9840143536
E-mail: lakshmanan.s@siemens.com

Rajkot

"Vrjraj", Chandanpark Society
Opp. Gyanganga Vidhyapith, Nr. Raiya Circle
Rajkot - 360005, Gujarat
Mobile: +91 9825021026
E-mail: hiren.raythatha@siemens.com

Ranchi

HI-187, Harmu Housing Colony, Harmu
Ranchi - 834002, Jharkhand
Mobile: +91 9234610953
E-mail: naveen.dasgupta@siemens.com

Renukoot

Above ICICI Prudential Office, Patel Nagar
Murdhawa, Distt. Sonebhadra
Renukoot - 231217, Uttarpradesh
☎ : +91 5446 254693
Mobile: +91 9838007897
E-mail: bhav.srivastava@siemens.com

Rourkela

Plot No. LCR 618, 1st Phase Chhend
Rourkela - 769015
Mobile: +91 9438529778
E-mail: samir.chintak@siemens.com

Nagpur

5th Floor, Land Mark Building
Wardha Road, Ramdas Peth
Nagpur - 440 010
☎ : +91 712 3093000
Fax: +91 712 3093111

New Delhi

4A, Ring Road, I.P.Estate, Box.No.7036
New Delhi - 110 002
☎ : +91 11 30995000-5
Fax: +91 11 30995030

Pune

Tower B/701-705, ICC Trade Tower
403A, Senapati Bapat Road
Pune - 411016
☎ : +91 20 30466000
Fax: +91 20 30466060

Vishakhapatnam

2nd Floor, 30-8-47, Lakshmi Narasimha Towers
Banu Street, Daba Gardens
Visakhapatnam - 530 020, Andhra Pradesh
☎ : +91 891 3050 200
Fax: +91 891 3050 222

Rudrapur

House No.16, Near Hero Honda Showroom
Model Colony, Rudrapur - 263153, Uttarakhand
☎ : +91 05944 245557
Mobile: +91 9839813707
E-mail: singh.ajay@siemens.com

Salem

3/25, Santosh Nagar, PACB Backside
Chinnathirupathi, Salem - 8
☎ : +91 0427 2401981
Mobile: +91 9894617772
E-mail: rubengerald.s@siemens.com

Surat

32, 33, Dattatreya Society, Mora Bhagal Char Rasta
Rander Road, Surat - 395005, Gujarat
Mobile: +91 9879510191
E-mail: chintan.naik@siemens.com

Surat

304, Shreeji Apt., Devikrupa Society
Opp. Dholakia Garden, Katargam
Surat - 395004, Gujarat
Mobile: +91 9727713634
E-mail: tarang.shah@siemens.com

Surat

Flat No. 202, D-1, Suryam Residence
Cause Way Road, Opp. Hari Darshan
Shingangpor-Dabholi Road, Katargam
Surat - 395004, Gujarat
Mobile: +91 9925001779
E-mail: chandrakant.keshrani@siemens.com

Trichy

Door No.106, Grd Flr., 5th Cross Street
Vidyalalai Road, Ganapthy Nagar, Thiruvanaik
Trichy - 605005
☎ : +91 0431 4345621
Mobile: +91 9840843121
E-mail: k.saravanakumar@siemens.com

Trivandrum

Udayakiran, T.C.No.28/535, Krishnakovil Road
Kathamukku, Trivandrum - 695024, Kerala
Mobile: +91 9895979604
E-mail: antony.john@siemens.com

Udaipur

303, Oasis Park, PP Singhal Marg, Ambavgarh
Udaipur - 313001, Rajasthan
☎ : +91 294 2430345
Mobile: +91 9829039120
E-mail: ajit.parashar@siemens.com

Vapi

Flat No.302, Samrajya IV, Royal Residency
Gokul Vihar Township, Charwada Road
Vapi - 396195, Gujarat
Mobile: +91 9825147957
E-mail: sachin.pardkar@siemens.com

Vapi

Flat No.203, Plot No.55, Kadri Manzil
Godal Nagar, Distt.Valsar, Vapi - 396191
Mobile: +91 9601267911
E-mail: muneer.shaikh@siemens.com

Vijayawada

D.No.37-1-198, Badavapat, John Street
Vijayawada - 520010, Andhra Pradesh
☎ : +91 866 3060833
Mobile: +91 98664 63639
E-mail: udaya.p@siemens.com

Siemens Ltd.

Infrastructure & Cities Sector

Low Voltage Global Products

R&D Technology Centre

Kalwa Works, Thane Belapur Road

Thane - 400 601

Fax: +91 22 33265627

E-mail: globalproducts.in@siemens.com

www.siemens.co.in

Order No.: 104219604

GP-01-001-001

(This replaces SGR-01-114-071)

Customer Care Toll free no.

1800 220 987 / 1800 209 0987

Email: adscs.india@siemens.com

Product upgradation is a continuous process. Hence, data in this pricelist is subject to change without prior notice. For the latest information, please get in touch with our Sales Offices.